

6.5KG Capacity Automatic Roller Washing Machine

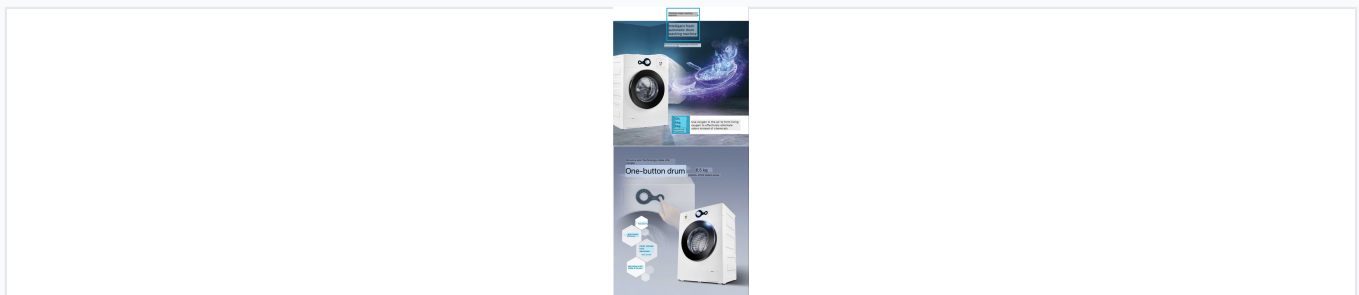
This automatic roller washing machine has a 6.5KG capacity and multiple wash programs. It features temperature and speed control, one-button washing, and a 95°C high-temperature self-cleaning function.



ADDITIONAL IMAGES



Product Overview



Features advanced live oxygen technology for odor elimination and a one-button control system.

Innovative Ozone Cleaning Technology

This 6.5kg automatic roller washing machine utilizes advanced active oxygen and ultrasound technology to achieve deep decontamination, sterilization, and odor removal without the need for chemical detergents. Designed with a high-efficiency hive structure inner tube and intelligent sensing, it ensures gentle fabric care and superior washing performance. The machine features a robust integrated molding fuselage and energy-efficient operation, making it an ideal, eco-friendly solution for professional laundry needs.

Technical Specifications

Washing Capacity	6.5 kg
Dehydrating Speed	1000 rpm
Washing Power	180 W
Dimensions (W x D x H)	595 x 470 x 850 mm
Motor Type	Serial
Color	Ballet White

Key Features



Advanced sterilization process ensures deep cleaning and removal of bacteria from the inner tube.

Available Programs

- Cottons+Linens
- Delicates/Silk
- Woollens
- Easy-Care
- 95°C High-Temp Self-Cleaning
- Intensive

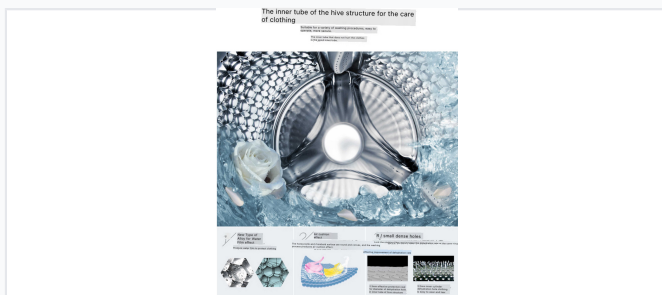
Intelligent Perception System

- Clothing quantity perception
- Temperature perception
- Open door perception
- Water level perception
- Foam perception
- Unbalanced perception

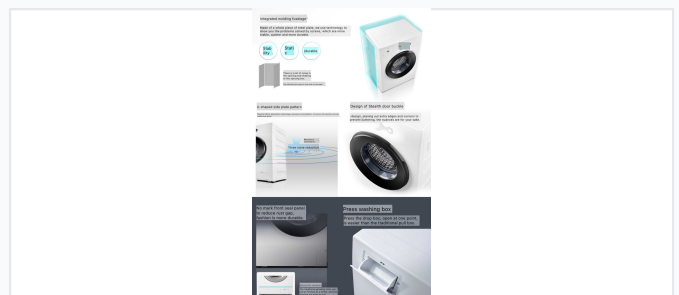
Core Technologies

Active Oxygen Sterilization, 6Sense Intelligence, Ultrasonic Cleaning, Integrated Molding

Design and Build



Designed for maximum fabric protection and improved dehydration efficiency.



Single-piece steel construction for superior stability, reduced noise, and increased durability.

Key Build Features

Anti-winding • Midway Add Clothes • S-shaped spray lifting tendons • TOX riveting technology

Drum Construction

Stainless steel 505mm broadened hive structure