

## 63A 230V AC Disconnecter Circuit Breaker

This disconnecter circuit breaker is suitable for AC 50/60Hz circuits with a rated voltage of 230V and a rated current up to 63A. It connects or disconnects circuits without a load, and isolates the circuit to the power supply.



### ADDITIONAL IMAGES



### Overview

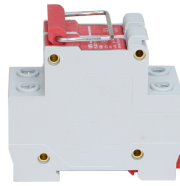


Product terminal connection diagram and clear ON/OFF indicator.

### Professional Electrical Disconnection

This disconnecter circuit breaker is engineered for secure electrical circuit isolation, specifically designed for 230V AC 50/60Hz systems. It excels in load-free switching applications, effectively isolating power supplies during maintenance to ensure maximum operator safety. Compliant with international standards, it provides a reliable and robust solution for professional power distribution environments.

## Electrical Specifications



Device labeling highlighting key electrical parameters and compliance.

### Rated Current

- 32
- 63

### Rated Operating Voltage

230 V

### Rated Impulse Withstand Voltage

4 kV

## Standards & Certification

### Industry Compliance

GB14048.3, IEC60947-3, CE

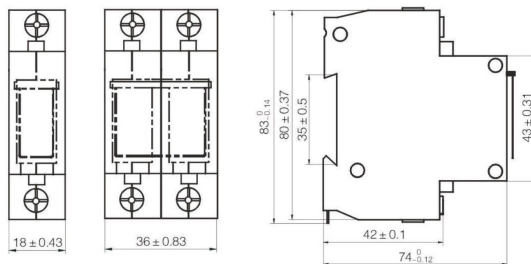
## Performance Metrics

### Mechanical Life

**10000 cycles**

Operations

## Technical Details



Precise mechanical dimensions for installation and integration planning.

### Operating Characteristics

Parameter	Value
Short-time withstand current (I <sub>cw</sub> )	12I <sub>e</sub> (1s)
Short-circuit making capacity (I <sub>cm</sub> )	20I <sub>e</sub> (1s)