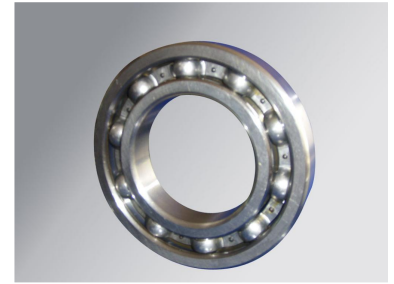


# 61810 Deep Groove Ball Bearing

This deep groove ball bearing is designed for efficient and reliable rotational movement in various applications. It features a single row of balls to support radial and axial loads in both directions, ensuring smooth and quiet operation.



## Product Overview

### High-Performance Deep Groove Ball Bearing

The 61810 deep groove ball bearing is a versatile, single-row rolling bearing designed for efficiency and reliability. Featuring a simple, non-separable structure with deep raceways, it is engineered to handle radial loads and axial loads in both directions simultaneously. Its design ensures low friction, high rotational speeds, and minimal vibration, making it an ideal choice for demanding applications in motors, gearboxes, and industrial machinery.

## Technical Specifications

### Accuracy Levels

ABEC-1 • ABEC-3 • ABEC-4

### Radial Play (Clearance)

- C2
- C0
- C3
- C4
- C5

### Vibration Level Codes

- V1
- V2
- V3

### Available Seal Types

Open Style, Z, ZZ, RS, 2RS, 2RZ

## Series Availability

### Supported Series

Series	Range
600 Series	607, 608, 609
6000 Series	6000 - 6020
6200 Series	6200 - 6220
6300 Series	6300 - 6320
6400 Series	6406, 6409

## Applications

### Industry Applications

Automobiles, Machine Tools, Motors, Instruments, Construction Machines, Railway Vehicles, Agricultural Machines