

60mm Mushroom Head Spring Return Push Button Switch

This 60mm mushroom head push button switch is designed with a spring return mechanism. The metal construction ensures durability and reliability in industrial environments.



ADDITIONAL IMAGES

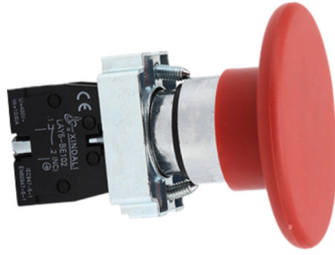


Product Overview

Industrial Mushroom Head Push Button

The 60mm mushroom head spring return push button switch is engineered for demanding industrial control applications. Constructed with a durable zinc alloy body and high-grade anti-flam plastic, this switch is designed to withstand mechanical wear and harsh environmental conditions. It features a large, highly visible actuator for reliable operation in emergency stop or control circuit configurations, ensuring safety and responsiveness in machinery and control panels.

Technical Specifications



Specializing in production of buttons and indicators since 1997

Robust metal construction designed for industrial durability and reliable electrical contact.

Performance Metrics

600 V

Rated Insulation Voltage

10 A

Heating Current

22 mm

Mounting Hole Diameter

Electrical Properties

Parameter	Value
Insulation Resistance	$\geq 50 \text{ M}\Omega$
Contact Resistance	$\leq 25 \text{ m}\Omega$
Dielectric Strength	AC 2.5KV/min
Voltage Wave Tolerance	$\pm 20\%$

Operational Life

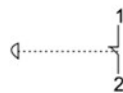
- Mechanical Life: 1,000,000 operations
- Electrical Life: 5,000,000 operations
- Continuous Working Life: 100,000 hours

Design & Construction

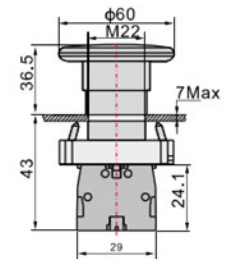


LAY5-BR42

Emergency stop
Spring return N/C



- Black $\Phi 60$ LAY5-BR22
- Green $\Phi 60$ LAY5-BR32
- Red $\Phi 60$ LAY5-BR42



Dimensional drawing for installation, featuring a 22mm mounting hole and 60mm head diameter.

Physical Characteristics

- Head Diameter: 60mm
- Action Type: Spring Return (Momentary)
- Main Material: Zinc Alloy & Anti-flam Plastic
- Contact Configuration: 1NC (Normally Closed)

Compliance & Standards

Certifications

CE, ISO 9001, RoHS, UL, IEC 60947-5-1