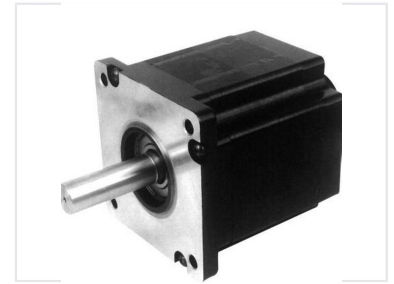


60mm Brushless DC Gear Motor

This 60mm brushless DC gear motor features high power density, quick reaction, and a long operational life. It is suitable for applications such as CNC machines, industrial controls, and home appliances.



Overview

High-Performance 60mm Brushless DC Gear Motor

This 60mm series brushless DC motor is engineered for high power density and long-life operation in demanding industrial environments. It features a permanent magnet construction that ensures high efficiency and energy savings compared to traditional DC motors. With its spark-free operation and low noise profile, it is an ideal solution for precision motion control in CNC machinery, medical equipment, and home appliances.

Key Performance Metrics

Key Performance Metrics

24 VDC

Rated Voltage

8

Number of Poles

408 W

Max Rated Power

1.3 N·m

Max Rated Torque

Technical Specifications

Protection Class

IP40 Standard • IP65 Optional • Waterproof

Work Duty

- S1 (Continuous)
- S2
- S3

Motor Type

Brushless Gear Motor

Construction

Permanent Magnet

Speed Range

1000 - 3000 rpm

Insulation Class

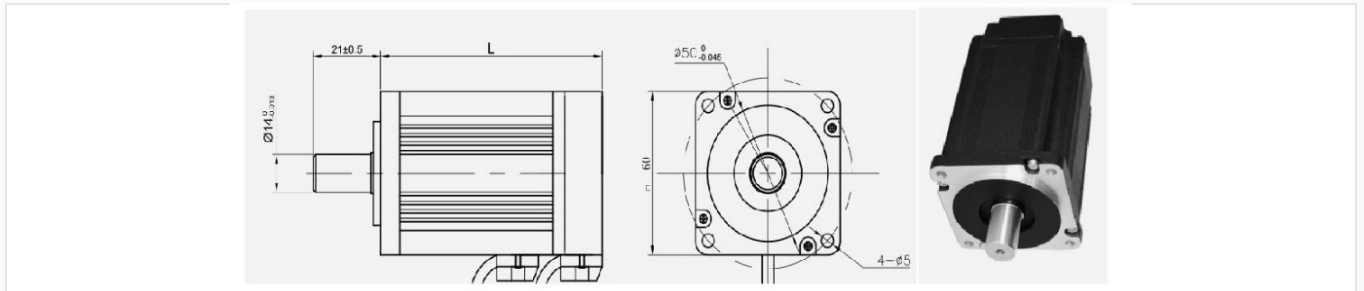
Class B, Class F

Model Variants

Performance by Model

Model Number	Power (W)	Speed (rpm)	Torque (N-m)	Length (mm)
60BLB0B003104RN-01	33.5	1000	0.32	72
60BLB0B010304RN-01	100	3000	0.32	72
60BLB1B006104RN-01	68	1000	0.65	92
60BLB1B020304RN-01	204	3000	0.65	92
60BLB2B010104RN-01	105	1000	1	114
60BLB2B031304RN-01	314	3000	1	114
60BLB3B013104RN-01	136	1000	1.3	134
60BLB3B040304RN-01	408	3000	1.3	134

Physical Dimensions



Dimensional diagram showing the 60mm frame size, 14mm shaft diameter, and mounting hole configurations.

Frame Size	60 mm
Shaft Diameter	14 mm

Applications

Common Applications	CNC Machine Tools, Electric Bicycles, Home Appliances, Industrial Control, Medical Field, Robotics
---------------------	--

Compliance

Certifications	CE • CCC
----------------	----------