

60mm 1.8° Stepper Motor

This stepper motor has a 60mm frame size and a 1.8° step angle. It is designed for precise positioning and motion control applications.



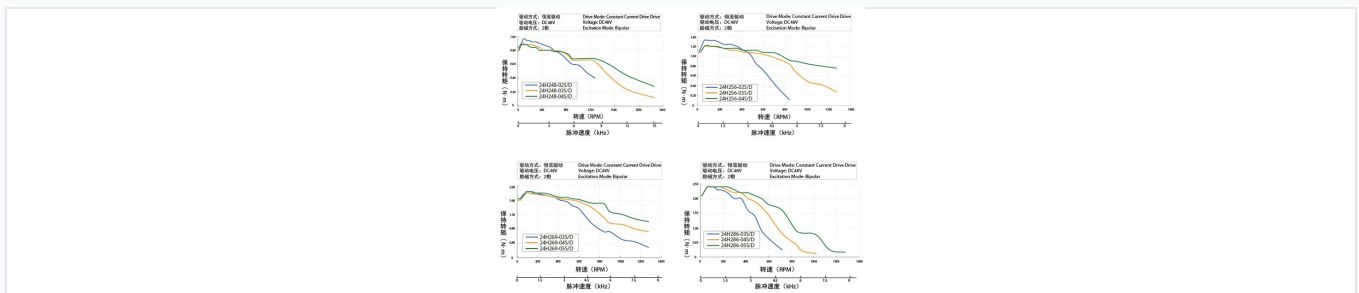
General Overview

Precision 60mm Stepper Motor

This high-precision 60mm frame size stepper motor features a 1.8-degree step angle, making it an excellent choice for demanding motion control and robotics applications. Built for industrial reliability, these units provide consistent holding torque and are compatible with standard constant current drive systems. The series includes multiple models with varying electrical characteristics to suit diverse automation requirements.

Frame Size	60 mm
Step Angle	1.8 °

Performance Data

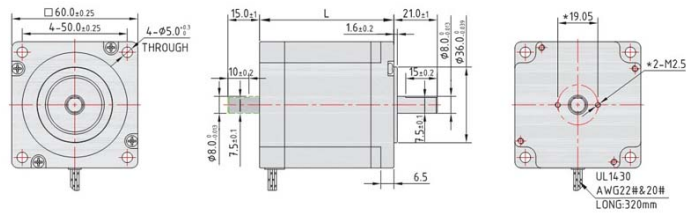


Performance torque curves for models 24H248, 24H256, 24H269, and 24H286 under constant current drive.

Model Specifications

Model	Current (A)	Resistance (Ω)	Holding Torque (N.m)
24H248-02S/D	2	1.5	1.1
24H248-03S/D	3	0.6	1.1
24H248-04S/D	4	0.4	1.1
24H256-02S/D	2	1.8	1.5
24H256-03S/D	3	0.8	1.5
24H256-04S/D	4	0.4	1.5
24H269-03S/D	3	1	2.2
24H269-04S/D	4	0.6	2.2
24H269-05S/D	5	0.3	2.2
24H286-03S/D	3	1.3	3

Physical Properties



Technical diagram showing mounting holes, shaft measurements, and wiring specifications.

Mechanical Dimensions

- Square face: $60.0\text{mm} \pm 0.25\text{mm}$
- Mounting holes: $4 \times 5.0\text{mm}$ diameter
- Shaft diameters: 8.0mm and 36.0mm
- Wiring: UL1430 AWG22/20, length 320mm
- Rear mounting: $2 \times \text{M2.5}$ points