

# 60 Series Brushless DC Motor

This brushless DC motor delivers high torque up to 0.75Nm. It features a wide speed range, high efficiency, and long service life.



## Product Overview

### High-Performance 60 Series BLDC Motor

The 60 Series Brushless DC motor is engineered for high-torque applications up to 0.75Nm, offering a wide speed range and exceptional efficiency. Designed for long-life performance, it is particularly well-suited for precision tasks such as electric seat adjustments in automotive environments. Its compact 60mm frame size combined with an 8-pole design ensures reliable power delivery and smooth operation.

#### Key Features

High Torque, Wide Speed Range, High Efficiency, Long Life Time, Brushless Design

## Electrical Performance

### Model Comparison

Model	Rated Power (W)	Rated Torque (Nm)	Rated Current (A)	Weight (kg)	Length (mm)
60DMW75-3630	80	0.25	3	0.9	75
60DMW95-3630	160	0.5	6	1.2	95
60DMW115-3630	230	0.75	0.75	1.6	115

### Rated Speed

**3000 rpm**

Rated Speed

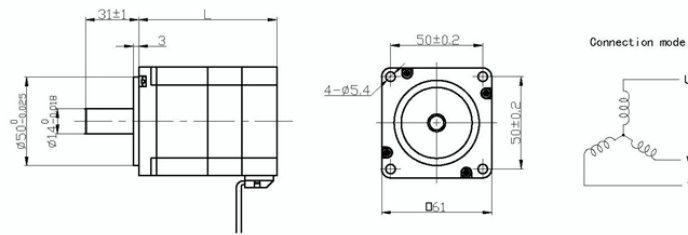
**4100 rpm**

No Load Speed

### Nominal Voltage

36 V

## Technical Specifications



Dimensional blueprint and connection diagram for the 60 Series Brushless DC Motor, highlighting mounting points and shaft specifications.

### Insulation Class

Class B

### Operating Conditions

- Ambient Temperature: -20 to +40
- Hall Effect Angle: 120 degree electrical
- Dielectric Strength: 500VDC for one minute
- Shaft Run Out: 0.025mm

### Winding Type

Star

### Number of Poles

8

## Wiring & Connectivity

### Lead Wire Configuration

Lead No.	Color	Gauge	Function
1	RED	18AWG UL1569	Phase U
2	YEL	18AWG UL1569	Phase V
3	BLA	18AWG UL1569	Phase W
4	RED	26AWG UL1569	+5V
5	BLU	26AWG UL1569	Hall A
6	GRE	26AWG UL1569	Hall B
7	WHI	26AWG UL1569	Hall C
8	BLA	26AWG UL1569	GND