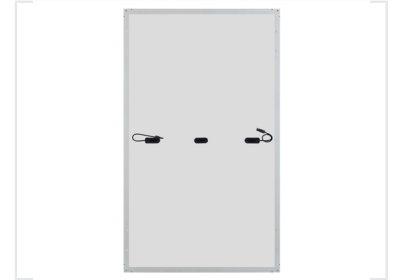
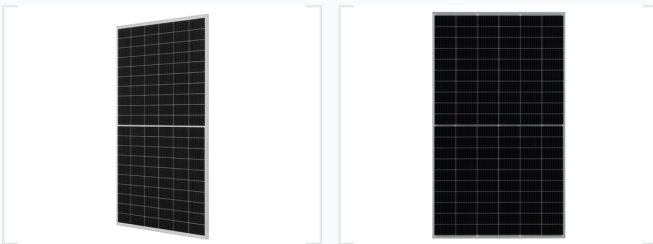


60-Cell MBB Half-Cell Solar Panel

This 60-cell MBB half-cell module uses PERC technology. It provides higher output power and better mechanical loading tolerance.



ADDITIONAL IMAGES



Overview

High-Efficiency Solar Module

This 60-cell MBB half-cell solar panel is engineered for residential, commercial, and utility-scale solar installations. Utilizing advanced cell technology and manufacturing processes, the module delivers exceptional power output and long-term reliability. Its robust construction ensures consistent performance and durability, even when subjected to harsh environmental conditions.

Key Features

Performance Metrics

60 cells
Cell Count

100 MBB
Technology

Key Advantages

High Module Efficiency, Low-Light Performance, Enhanced Shading Tolerance, Positive Power Tolerance

Applications

Suitable Applications

- Residential Rooftops
- Commercial Installations
- Utility-Scale Projects
- Grid-Tied Systems
- Off-Grid Systems

Certifications

Compliance & Quality

International Quality Certified • International Safety Certified