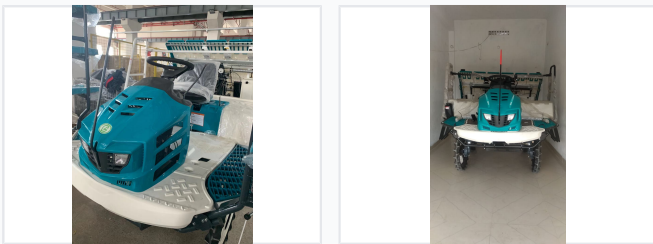


6-Row Riding Rice Transplanter

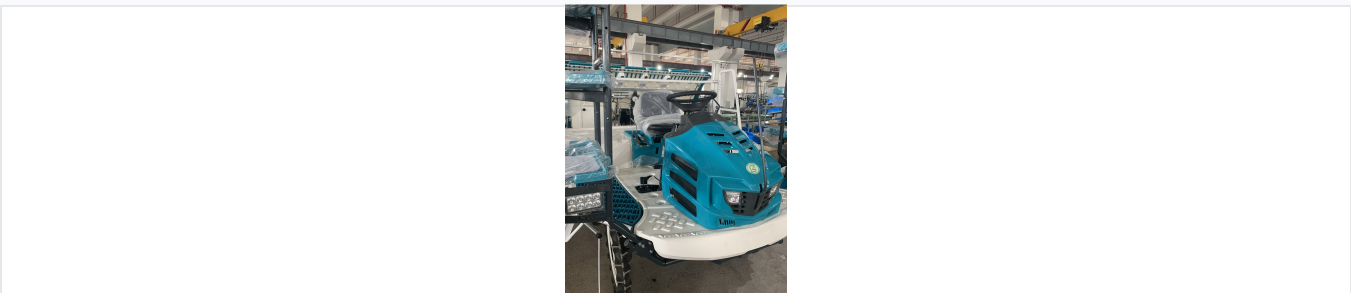
The 6-row riding rice transplanter is designed for efficient and precise planting of rice seedlings. It ensures uniform planting depth and spacing to promote optimal growth and yield.



ADDITIONAL IMAGES



Overview



The 6-row riding configuration allows for high-speed transplanting with consistent seedling placement.

High-Efficiency 6-Row Rice Transplanting

This 6-row riding-type rice transplanter is engineered for high-speed, precise planting in diverse paddy field conditions. It features a powerful diesel engine and a robust chassis designed for long-term durability and stable supply capacity. With automated seedling feeding and adjustable planting density, it significantly reduces labor costs while ensuring uniform growth for medium to large-scale rice farming operations.

Performance Metrics

Key Performance Stats

6 Rows

Planting Rows

18.5 kW

Rated Power

3600 r/min

Engine Speed

Engine & Power

Engine Type	Diesel Power
Horsepower	25.2 PS

Operation & Design



Robust construction and precise planting mechanisms ensure durability and uniform crop growth.

Key Features

- High-speed planting mechanism
- Adjustable planting density and depth
- Automatic seedling feeding system
- Ergonomic operator seat with intuitive controls
- Maneuverable compact design for various field sizes

Machine Type

Riding Type / Self-Propelled

Service & Warranty

Service Highlights

Free Replacement Parts • Quality Guaranteed • Professional Support

Warranty Period

One-year warranty

Field Suitability

Application Scope

Paddy Fields, Medium-scale Farming, Large-scale Cultivation, Wetland Rice