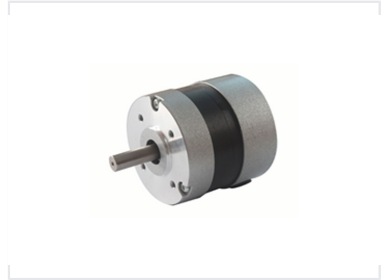


# 57 Series Brushless DC Motor

This brushless DC motor provides high torque up to 0.7Nm. It features a wide speed range, high efficiency, and long life.



## Overview

### High-Performance 57 Series BLDC Motor

The 57 Series Brushless DC Motor is designed for high-efficiency applications requiring a wide speed range and high torque output up to 0.7Nm. Featuring a 6-pole design and star winding, these motors offer a long service life and precise control. They are ideal for automotive accessories, such as electric seat adjustment systems, and other industrial automation needs.

## Key Performance Metrics

### Performance Highlights

**260 W**

Max Rated Power

**0.7 Nm**

Max Rated Torque

**3500 rpm**

Rated Speed

**24 V**

Operating Voltage

## Technical Specifications

### Model Specifications Table

Model	Rated Power (W)	Rated Torque (Nm)	Rated Current (A)	Weight (Kg)	Length (mm)
57DMWH54(6)-2435	70	0.2	4	0.5	54
57DMWH69(6)-2435	140	0.37	8	0.7	69
57DMWH105(6)-2435	260	0.7	15	1.3	105

## General Characteristics

### Insulation Class

Class B

### Winding Type

Star

### Number of Poles

6

### Hall Effect Angle

120° electrical angle

### Operating Temperature

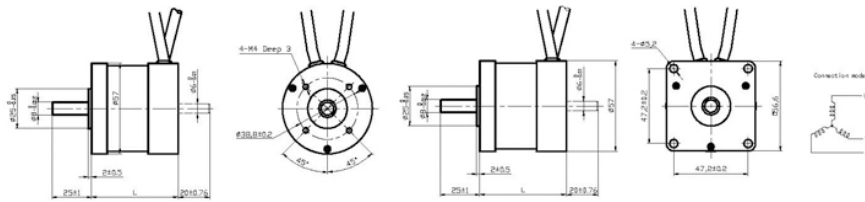
-20 to +40 °C

## Wiring & Connectivity

### Lead Wire Configuration

- Phase U: Red (18AWG)
- Phase V: Yellow (18AWG)
- Phase W: Black (18AWG)
- Hall +5V: Red (26AWG)
- Hall A: Blue (26AWG)
- Hall B: Green (26AWG)
- Hall C: White (26AWG)
- Hall GND: Black (26AWG)

## Mechanical Data



Technical drawing showing motor dimensions, mounting hole patterns (4-M4), and shaft specifications for the 57mm series.

### Shaft Run Out

0.025 mm

### Dielectric Strength

500VDC for one minute