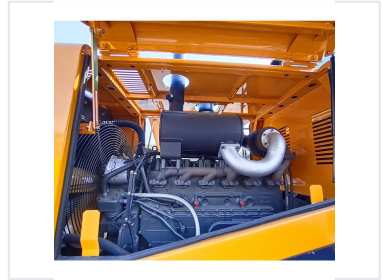
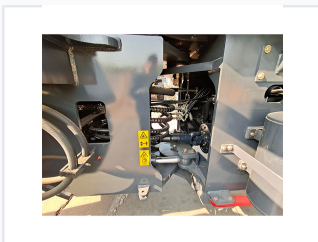


## 5.3-Ton Wheel Loader

This 5.3-ton wheel loader is designed for efficient material handling in construction and industrial applications. It features a robust engine, durable transmission, and comfortable cabin for optimal productivity.



### ADDITIONAL IMAGES



### Overview

#### Robust Earthmoving Performance

This 5.3-ton wheel loader is engineered for demanding construction and industrial applications, offering a reliable solution for heavy-duty material handling. Built with a solid, vibration-absorbing frame, it excels in challenging working conditions while prioritizing operator comfort and safety. With advanced hydraulic controls and a panoramic cab view, this machine delivers high productivity and precision in diverse terrains.

### Performance Metrics

#### Loading Capacity

**5.3 ton**

Max Capacity

#### Engine Compatibility

Perkins, Yanmar, Kohler, Diesel

### Operator Comfort & Safety

#### Cabin Highlights

- Vibration-absorbing seat
- Panoramic floor-to-ceiling tinted glass
- Easy-access cabin steps
- Rear-view camera with colorful display

#### Control Interface

Ergonomic pilot joystick for steering and loader control

## Engineering & Design

Frame Construction	Specialized frame designed to handle heavy vertical and horizontal loads
Attachment System	Yes
Attachment Compatibility	Supports multiple hydraulic attachments with quick-hitch system