

52-Meter Truck Mounted Concrete Pump

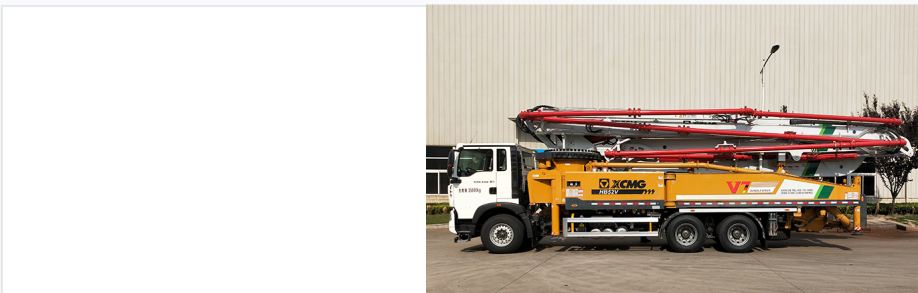
This concrete pump truck features efficient skirt valve and S valve pump technology. It also offers stable reversing buffer technology and reliable full hydraulic reversing technology.



ADDITIONAL IMAGES



Overview



Side view of the 52-meter boom concrete pump truck.

High-Efficiency Concrete Pumping Solution

This 52-meter truck-mounted concrete pump offers advanced skirt and S-valve pumping technology for superior performance on complex construction sites. It features a robust chassis designed for high-torque output, excellent off-road mobility, and energy conservation. The integration of electric control reversing and hydraulic buffer technology ensures precise concrete placement with minimal system impact.

Technical Specifications



Heavy-duty truck chassis platform for concrete pouring operations.

Outline Dimensions	13000 x 2540 x 4000 mm
Overall Weight	35000 kg
Wheelbase	4800 + 1400 mm

Operational Highlights



Multi-section boom system extended for maximum reach.

Advantages

- Ultimately safe boom structure
- High rigidity lower structure
- High-performance hydraulic system
- Improved pumping efficiency
- Electric control reversing system

Performance Metrics

Efficiency Gain

5 %

Efficiency Increase