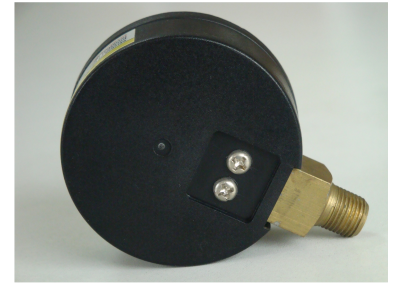


# 50mm Pressure Gauge with Brass Connection

This 50mm pressure gauge is designed for general purpose pressure measurement. It features a plastic housing and a brass connection, with a pressure range of 0-100 psi.



## ADDITIONAL IMAGES



## Product Overview

### Professional Pressure Measurement

This 50mm pressure gauge is a robust, general-purpose instrument designed for accurate pressure monitoring in industrial and commercial environments. Featuring a durable housing and a reliable brass connection, it provides consistent performance across a wide range of pneumatic and hydraulic systems. Its compact design allows for easy installation in confined spaces, while the clear dial ensures precise readings for effective process control.

## Technical Specifications

Dial Size	50 mm
Pressure Range	-1 to 1000 bar
Gauge Type	Liquid Filled, Dry Type
Mounting Type	Bottom, Back, Lower Back

## Materials and Construction

### Case Materials

- SS304
- SS316
- Black Steel
- Plastic

### Window Options

- Glass
- Tempered Glass
- Safety Glass
- PC Glass
- Acrylic

### Internal Components

Component	Material Options
Movement	SS304 / Brass
Bourdon Tube	SS316 / Phosphor Bronze
Connection Material	Brass
Thread Standards	PT, NPT, G