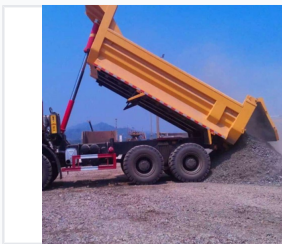


50-Ton 6x4 Off-Road Mining Dump Truck

This 50-ton 6x4 mining dump truck is designed for off-road use. It features a unique steering mechanism and a dual-circuit brake system.



ADDITIONAL IMAGES



Overview



Robust construction built for demanding mining environments.

Heavy-Duty Mining Performance

This 6x4 off-road mining dump truck is engineered for high-intensity opencast mining applications. Featuring a 50-ton payload capacity and a high-torque drivetrain, it is designed to deliver excellent starting and climbing abilities even in challenging terrains. The vehicle incorporates an optimized steering mechanism and a high-pressure dual-circuit brake system to ensure operator safety, reduced maintenance requirements, and superior material transport efficiency.

Performance



Key Performance Metrics

50 ton

Payload Capacity

65 km/h

Max Travel Speed

33 %

Max Gradeability

Dimensions



Detailed Dimensions

Metric	Specification
Overall Dimensions (LxWxH)	8860*3275*3740 mm
Cargo Body Size (LxWxH)	5800*2400*1650 mm
Cargo Thickness (Bottom/Side)	16mm / 12mm
Wheelbase	4000+1400 mm

Weight

Weight Specifications

- 17000
- 30000
- 47000

Technical Details

Electrical System

24V Operating Voltage, 70A/28V Alternator