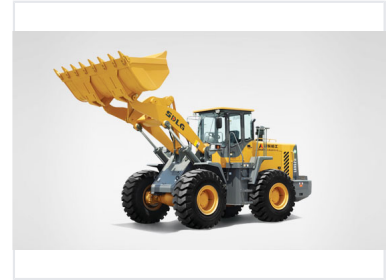


5-Ton Wheel Loader

This 5-ton wheel loader is designed for heavy-duty applications in construction and mining. It features a powerful engine and a large-capacity bucket for efficient material handling.



Overview

High-Performance 5-Ton Wheel Loader

This robust 5-ton wheel loader is engineered for demanding heavy-duty applications, including construction, mining, and large-scale material handling. It features a high-capacity bucket and an advanced hydraulic system, ensuring efficient material scooping and precise operation. Designed with operator comfort and durability in mind, this machine offers excellent maneuverability and long service life to maximize productivity on the job site.

Performance Metrics

Rated Load

5000 kg

Rated Load

160 kN

Max. Traction Force

Overall Working Weight	16400 kg
Max. Grade Ability	28 °

Bucket & Hydraulics

Rated Bucket Capacity	2.8 m ³
Max. Discharging Height	3070 mm
Dumping Distance	1190 mm

Dimensions

Overall Dimensions (LxWxH)	7663 x 3024 x 3349 mm
----------------------------	-----------------------