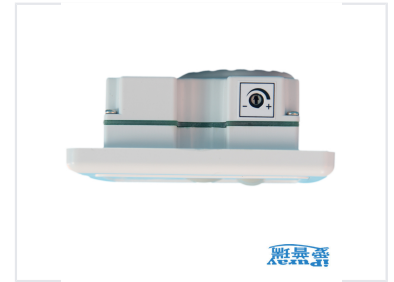


# 5-Speed Ceiling Fan and Light Remote Control Switch

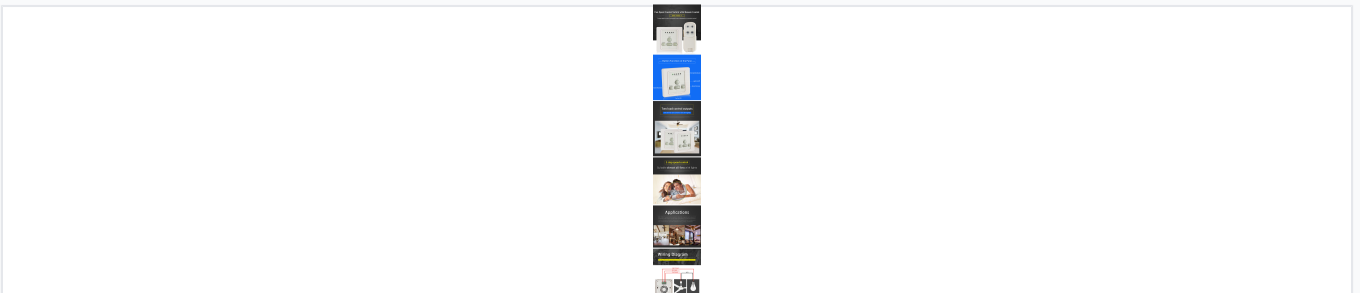
This speed control switch has a built-in micro controller unit. In addition to a wall mount keypad unit, it also has a handheld remote control.



## ADDITIONAL IMAGES



## Overview



Comprehensive overview of the wall panel interface, remote control functions, and wiring diagram for dual load control.

### Smart 5-Speed Fan & Light Control

The BRT-F005-T is a sophisticated speed control switch featuring a built-in micro controller for precise AC motor regulation. Designed for easy retrofit into standard wall boxes without a neutral wire, it provides dual control for both ceiling fans and integrated lighting. This versatile system includes both a wall-mounted keypad and a handheld remote, making it an ideal solution for residential and commercial environments like schools, hospitals, and restaurants.

## Key Features

### Speed Control

5

Speed Steps

### Functional Highlights

- Dual load control outputs (Fan and Light)
- Memory function (starts at last used speed)
- Adjustable minimum speed for motor compatibility
- Wall-mount and remote control operation
- No neutral wire required for installation

## Technical Specifications

### Electrical Ratings

Parameter	Value
Input Voltage	220-240V AC 50Hz
Lamp Load Capacity	Up to 300W
Fan Load Capacity	Less than 150W
Material	ABS-V0 Flame Resistance

### Design Series

Classical 86 series

## Applications

### Compatible Equipment

- Ceiling Fans with Lights
- Ventilation Fans
- Pumps
- Blowers

### Recommended Applications

Homes, Schools, Laboratories, Hospitals, Bars, Restaurants

## Interface

### Visual Indicators

5 LED Speed Indicators (I-V) • Fan Status • Light Status