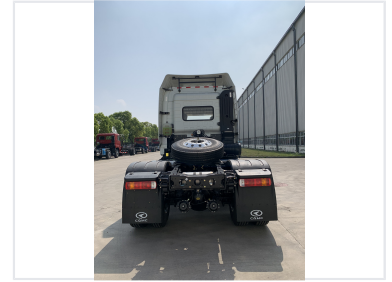


4x2 Tractor Truck Prime Mover

This 4x2 tractor truck is a robust prime mover designed for heavy-duty hauling applications. Its durable chassis, powerful engine, and comfortable cabin make it suitable for diverse operating conditions.



ADDITIONAL IMAGES



Overview

Heavy-Duty Prime Mover

This 4x2 tractor truck is engineered for reliability and performance in long-haul and regional transport logistics. Built with a robust chassis and a high-torque engine, it offers excellent maneuverability and fuel efficiency for various trailer applications. The cabin is designed with driver comfort in mind, featuring ergonomic seating, climate control, and advanced safety systems to ensure productivity on the road.

Performance & Engine

Engine Performance

345 hp

Horsepower

1660 N.m

Max Torque

9.84 L

Displacement

Engine Specifications

Parameter	Value
Cylinders	6
Max Rated Speed	1900 rpm
Emission Standard	Euro V
Bore x Stroke	118 x 150 mm

Dimensions & Weight

Weight Specifications

- Kerb Weight: 6805 kg
- Rated GVW: 18000 kg
- Quasi-tow Mass: 34865 kg

Overall Dimensions	5915 x 2495 x 3200 mm
--------------------	-----------------------

Cabin & Comfort

Cabin Amenities

Air Conditioning, MP3/Radio, Sleeper Berth, Power Windows, Hydraulic Cab Reversal, Adjustable Steering Wheel

Drivetrain & Chassis

Axle Configuration

4x2 Drive • Front Axle: 7.5T • Rear Axle: 16T

Transmission

9 speeds

Safety & Electrical

Braking System

- Dual circuit compressed air brake
- Drum braking
- Spring energy parking brake
- Engine exhaust brake
- ABS included

Electrical System

24V system with 150AH dual batteries