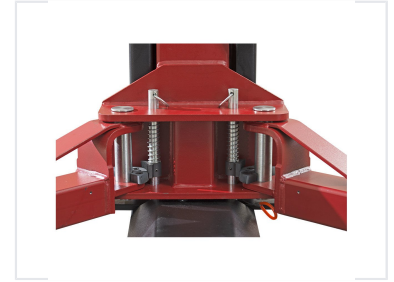


## 4T Two-Post Automotive Lift

This two-post car lift has a 4-ton lifting capacity for various vehicle models. It features a two-side safety unlock release mechanism for secure and controlled lowering.



### ADDITIONAL IMAGES



### Overview

#### Professional Automotive Lifting Solution

This 4-ton two-post automotive lift is engineered for stability and reliability in professional workshops. Featuring a dual-point safety lock release and automatic arm restraints, it ensures operator safety during every maintenance task. The system includes robust safety features like relief valves to prevent overloading and an up-limit switch to protect the cylinders, making it a dependable choice for servicing a wide range of vehicles.

### Performance Metrics

#### Key Performance Metrics

**4000 kg**

Lifting Capacity

**1930 mm**

Max Lift Height

**50 sec**

Time to Full Rise

### Technical Dimensions

#### Dimensions & Specifications

Specification	Value
Overall Height	2824 mm
Overall Width	3370 mm
Column Width	2780 mm
Minimum Height	100 mm
Shipping Weight	580 kg

## Safety & Features

### Safety Features

- Double point safety lock release
- Automatic arm lock restraints
- Relief valve built in power pump
- Up-limit switch for cylinder protection
- Door guards protection rubber
- Heavy duty cable and pulley system

### Certifications

CE Certified

## Installation & Logistics

### Unloading Requirements

Forklift or Tractor is required from customer for unloading the product.

### Included Accessories

Anchor bolts, Mounting hardware, Truck adapters (1 set)