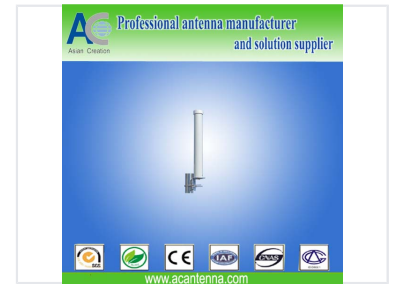


# 4G LTE Fiberglass Antenna

Antennas support LTE and 4G mobile broadband. Compatible antennas include portable, magnetic and permanent mount types.



## Overview

### High-Performance 4G LTE Antenna

This durable fiberglass antenna is engineered for reliable wireless communication across a wide frequency range of 698-960 and 1710-2700MHz. Designed for demanding environments, it features a robust construction that ensures long-lasting performance and resistance to environmental factors. It is an ideal solution for cellular networks, data transmission, and various IoT applications requiring consistent connectivity.

## Electrical Specifications

### Gain

**4 dBi**

Low Band Gain

**6 dBi**

High Band Gain

### Beamwidth

Direction	Width
Horizontal	360°
Vertical	18°

Frequency Range	698-960 / 1710-2700 MHz
V.S.W.R	<2.5:1
Impedance	50 ©
Maximum Input Power	100 W

## Mechanical Specifications

### Connector Type

N Female

Dimensions | 170x 480 mm

Weight | 1 kg

Mounting Method | Pole Mount

## Environmental Specifications

Operating Temperature | -40°C to +70°C

## Technical Features

Radiation Pattern	Omni-directional
Polarization	Vertical