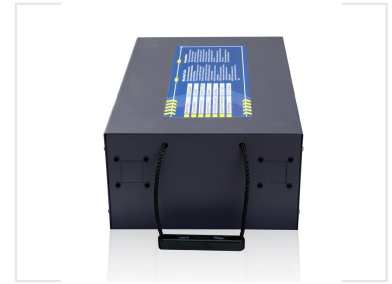


# 48V 200AH LiFePO4 Rechargeable Battery

This 48V 200AH LiFePO4 lithium battery provides a high-capacity, rechargeable energy storage solution. The battery features enhanced safety features and a long cycle life.



## ADDITIONAL IMAGES



## Product Overview

### High-Performance Energy Storage

This 48V 200AH LiFePO4 rechargeable battery is designed as a robust energy storage solution for off-grid solar power systems and demanding industrial applications. Utilizing advanced lithium iron phosphate chemistry, it provides a high energy density, long cycle life, and enhanced safety features compared to traditional lead-acid alternatives. The unit features built-in protection against overcharging, over-discharging, overcurrent, and short circuits, ensuring reliable and efficient power delivery.

## Electrical Specifications

Nominal Capacity	200 AH
Charge Voltage	58.4 VDC
Max Charge Current	50 A
Max Discharge Current	100 A

## Performance & Safety

### Cycle Life

**3000 Cycles**

Charge/Discharge Cycles

### IP Grade

IP65

### Safety Protections

Overcharge Protection, Over-discharge Protection, Overcurrent Protection, Short Circuit Protection, Overtemperature Protection, Cell Equalizer

## Operating Environment

### Storage Conditions

Parameter	Specification
Temperature	25±5°C
Humidity	d80%RH
Max Storage Time	d6months

Operating Temperature	-10°C to 50°C
-----------------------	---------------

## Installation

### Mounting Options

- Horizontal Case
- Wall Hanging Case