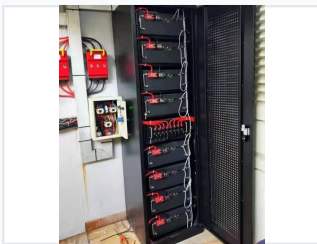


48V 100Ah Lithium Iron Phosphate Battery Pack

This 48V 100Ah lithium iron phosphate battery pack provides green energy with a long cycle life of 2000 cycles at 80% DOD. The maintenance-free battery pack has an internal BMS with full protection and high-temperature performance.



ADDITIONAL IMAGES



Overview

High-Performance Energy Storage Solution

This 48V 100Ah Lithium Iron Phosphate (LiFePO₄) battery pack is designed for demanding uninterruptible power supply (UPS) and energy storage applications. It offers a sustainable, non-toxic, and maintenance-free alternative to traditional battery technologies, featuring a long cycle life of 2,000 cycles at 80% DOD. With an integrated Battery Management System (BMS) and robust rack-mount design, it ensures high safety and reliability for critical infrastructure.

Key Performance Metrics

Key Performance Metrics

48 V

Nominal Voltage

100 Ah

Nominal Capacity

2000 cycles

Cycle Life (80% DOD)

50 A

Standard Charge Current

Technical Parameters

Item	Technical parameter		Series
Model	LFP48100	LFP48120	
Material and color	Aluminum	Aluminum	
Rated capacity	100Ah	120Ah	
Q	0.32V	0.20V	
Discharge cut-off voltage	43.2V	43.2V	Single cell: 2.7V
Charging cut-off voltage	58.4V	58.4V	Single cell: 3.65V
Standard charging current	50A	50A	Standard: 0.1C, 0.2C
Charging current limit	10A	20A	10C
Shipping voltage (SOC 40%)	e49.8	e49.8	
Electrolyte	LiPF6/EC/DEC	LiPF6/EC/DEC	Class "A" or "B" liquid
Temperature range	-20°C to 55°C	-20°C to 55°C	
Operating temperature	Charging: 0°C to 45°C Discharging: -20°C to 55°C Storage: -10°C to 35°C (Recommended)	Charging: 0°C to 45°C Discharging: -20°C to 55°C Storage: -10°C to 35°C (Recommended)	
Installation method	Rack	Rack	
Parallel connection	Maximum support 15 groups in parallel	Maximum support 15 groups in parallel	

Detailed technical parameters for the LFP 48100 and 48120 models, including voltage, current, and environmental ratings.

Voltage & Current Ratings

Parameter	Value
Nominal Voltage	51.2V
Discharge Cut-off Voltage	43.2V (Single cell: 2.7V)
Charging Cut-off Voltage	58.4V (Single cell: 3.65V)
Standard Continuous Discharge Current	50A
Charging Current Limit	10A / 20A
Shipping Voltage (SOC 40%)	e49.8

Physical & Environmental

Operating Temperature Range

- Charging: 0°C to 45°C
- Discharging: -20°C to 55°C
- Storage: -10°C to 35°C (Recommended)

Dimensions 487 x 453 x 200.5 mm

Battery Weight 58.5 kg

Safety & Management

Integrated Protection Internal BMS, High Voltage Protection, No Memory Effect, Low Self-Discharge, Non-Toxic, Maintenance Free

Connectivity & Scalability

Communication Interfaces

RS232 • RS485 • CAN

Parallel Support Maximum 15 groups in parallel

Installation

Installation Method Rack-mounted

Monomer Shell Material Aluminum