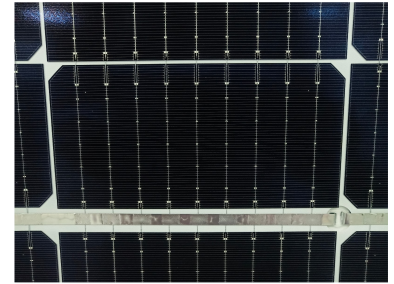
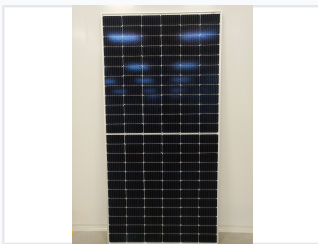


# 445W Monocrystalline Bifacial Double Glass Solar Panel

This monocrystalline solar panel utilizes multi-busbar and half-cut cell technology for improved current collection and reduced energy loss. It is designed to withstand a snow pressure of 5400Pa on the front and a wind pressure of 2400Pa on the rear.



## ADDITIONAL IMAGES



## Product Overview

### High-Efficiency Bifacial Technology

This 445W monocrystalline solar module features advanced bifacial technology, allowing for energy generation from both the front and rear surfaces to maximize power output. Built with a robust double glass construction, it offers superior durability and resistance to harsh environmental factors. It is an ideal solution for residential, commercial, and utility-scale solar installations seeking long-term reliability and enhanced energy yield.

## Technical Specifications

### Rated Power

**445 W**

Power Output

### Construction Features

- Double Glass Design
- 9 Busbars (9BB)

### Cell Technology

Monocrystalline, P-Type, PERC, Bifacial, Half Cell