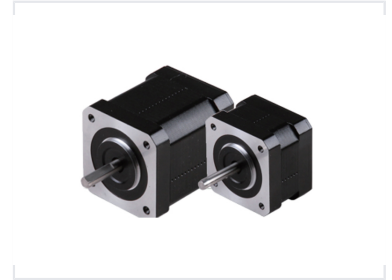


42mm 0.9° Stepper Motor

This stepper motor features a step angle of 0.9 degrees for increased accuracy. Its design ensures high reliability in various applications.



Overview

High-Precision 42mm Stepper Motor

This 42mm frame size stepper motor features a 0.9° step angle, offering superior positioning accuracy compared to standard models. Designed for professional motion control applications, it provides high reliability and consistent performance. Its robust build quality makes it an ideal solution for CNC machinery, robotics, and industrial automation systems requiring fine-tuned movement.

Key Features

Technical Highlights

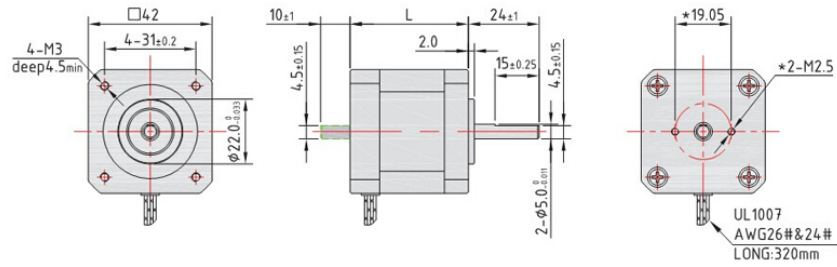
0.9° Step Angle, High Accuracy, Bipolar Excitation, High Reliability

Technical Specifications

Motor Series Performance Data

Model	Current (A)	Holding Torque (N.m)	Length (mm)	Weight (Kg)
17H431-01S/D	0.6	0.12	31	0.2
17H435-01S/D	0.6	0.22	35	0.24
17H441-01S/D	0.6	0.32	41	0.3
17H449-01S/D	0.6	0.4	49	0.36
17H461-01S/D	0.6	0.68	61	0.5

Mechanical Construction



Dimensional outline and mounting hole configuration for the 42mm motor series.

Wiring Specifications

- Wire Type: UL1007
- Gauge: AWG26# & 24#
- Cable Length: 320mm

Mounting Dimensions

42 mm

Flange Size

5 mm

Shaft Diameter

4.5 mm

Mounting Screw Depth