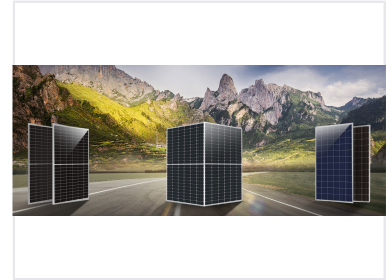


420-460W Black 9BB Half-Cell Solar Panel

This solar module is assembled with multi-busbar PERC cells, offering higher power output. The half-cell configuration reduces energy loss caused by shadows and provides better anti-shading performance.



ADDITIONAL IMAGES



Product Overview

High-Efficiency Solar Module

This black 9BB half-cell solar module is engineered to deliver high performance with an output range of 420W to 460W. Its half-cell design reduces internal resistive losses, enhancing energy conversion efficiency and overall system reliability. Designed with aesthetics and durability in mind, it is an ideal solution for both residential and commercial solar installations.

Technical Specifications

Cell Type	Mono Crystalline
Number of Cells	156
Configuration	6x24 Half-Cell
Busbar Technology	9BB

Physical Properties

Dimensions	2185 x 1004 x 40 mm
Weight	25 kg
Front Glass	3.2mm Tempered Low Iron Glass
Frame	Anodised Aluminium

Electrical Connectivity

Junction Box	Split Junction Box (IP68, three diode)
Connector	MC4 Compatible
Output Cables	4.0mm ² , 300mm length