

40-Ton Mining Articulated Dump Truck

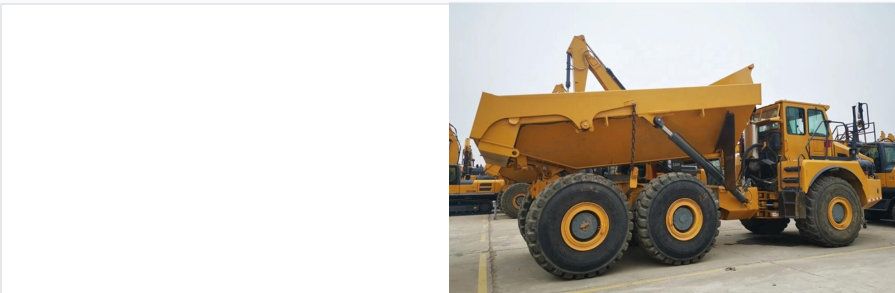
This 40-ton articulated dump truck is designed for heavy-duty mining and construction operations. It features a robust design and powerful engine for efficient material hauling across challenging terrains.



ADDITIONAL IMAGES



Overview



High-Performance Articulated Hauler

This 40-ton articulated dump truck is engineered for demanding mining and large-scale earthmoving operations. It features real-time six-wheel drive and all-terrain self-adaptive technology for superior traction in challenging conditions. The vehicle integrates advanced safety systems, a high-capacity hydraulic dump system, and an ergonomic cab design to ensure maximum operator productivity and comfort.

Technical Specifications



| | |
|-----------------------------|----------|
| Engine Model | QSB6.7 |
| Rated Power | 178 kW |
| Total Weight | 17000 kg |
| Tire Specification | 17.5-25 |
| Front Axle Ground Clearance | 586 mm |

Performance Metrics



Forward & Reverse Speeds

| Direction | Speeds (km/h) |
|-----------|----------------------|
| Forward | 5, 8, 11, 19, 23, 38 |
| Reverse | 5, 11, 23 |

| | |
|-------------------------|--------|
| Maximum Gradeability | 25 % |
| Tractive Effort | 88 kN |
| Working System Pressure | 22 MPa |