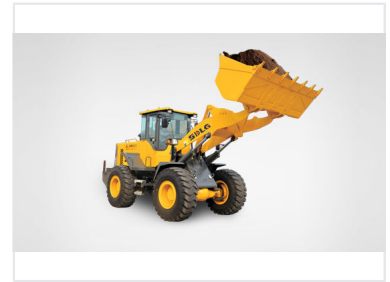


4-Ton Wheel Loader

This 4-ton wheel loader is equipped with a National Phase II Emission Standard compliant engine. Its optimized jib and bucket structures are well-suited to various operating conditions.



Overview

Heavy-Duty Material Handling

This 4-ton wheel loader is engineered for robust performance in demanding industrial environments, including construction sites and mining operations. It features a high-capacity 2.3m³ bucket and a powerful hydraulic system, ensuring efficient material handling of gravel, sand, and soil. Designed with operator comfort and safety in mind, the cabin offers excellent visibility and intuitive controls to maximize productivity throughout the workday.

Performance Metrics

Rated Load

4000 kg

Rated Load

125 kN

Max. Breakout Force

Max. Grade Ability

28 °

Dimensions and Capacity

Working Dimensions

Metric	Value	Unit
Max. Discharging Height	2950	mm
Dumping Distance	1055	mm

Rated Bucket Capacity	2.3 m ³
Overall Working Weight	12700 kg
Overall Dimensions (L×W×H)	7295 × 2574 × 3240 mm