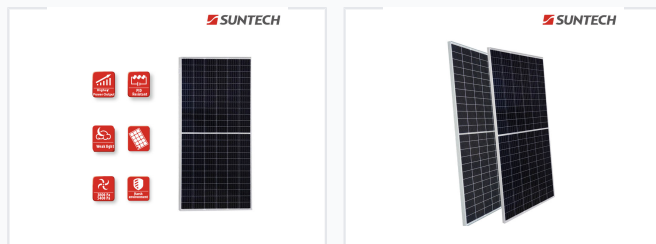


# 395W Monocrystalline Half-Cut Solar Panel

This monocrystalline solar panel features 144 half-cut cells and 9 busbars. It provides a 395W power output for solar system applications.



## ADDITIONAL IMAGES



## Product Overview

### High-Efficiency 144-Cell Half-Cut Module

This 395W monocrystalline solar module utilizes advanced half-cut cell technology and 9-busbar design to deliver superior energy yield compared to standard modules. Engineered for resilience, the panel is PID resistant and certified to withstand significant static loads, making it an ideal choice for diverse environmental conditions including coastal and desert regions. With an industry-leading linear performance warranty, this module ensures reliable, long-term energy production for residential, commercial, and utility-scale solar projects.

## Key Features

Key Features	Half-Cut Technology, 9 Busbars, PID Resistant, Low Temperature Coefficient, Excellent Weak Light Performance, IP68 Junction Box
--------------	---

## Electrical Characteristics

### STC Electrical Data

Parameter	Value	Unit
Optimum Operating Voltage (Vmp)	41.6	V
Optimum Operating Current (Imp)	9.5	A
Open Circuit Voltage (Voc)	48.8	V
Short Circuit Current (Isc)	10.4	A
Max Power (STC)	395 W	
Module Efficiency	19.6 %	

## Mechanical Specifications



Dimensions	2008 x 1002 x 35 mm
Weight	22.5 kg
Frame Material	Anodized Aluminum Alloy

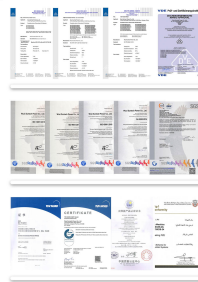
## Environmental Ratings

### Static Load Capacity

**5400 Pa**  
Front Side

**3800 Pa**  
Rear Side

## Warranty and Compliance



### Warranty Terms

- 12-Year Product Warranty
- 25-Year Linear Performance Warranty
- 97.5% Power output in Year 1
- 80.7% Power output in Year 25