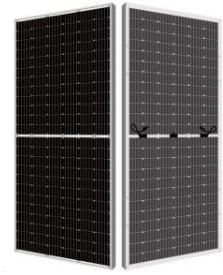
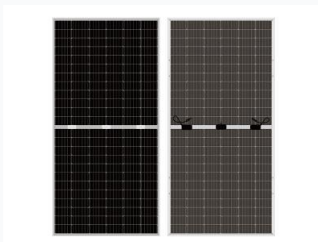


385-405W Bifacial Monocrystalline Solar Panel



This high-efficiency monocrystalline solar module utilizes half-cut cell and PERC technology. Its bifacial design allows energy absorption from both sides, increasing overall energy yield.

ADDITIONAL IMAGES



Product Overview

High-Efficiency Bifacial Solar Module

This high-performance bifacial monocrystalline solar module utilizes advanced half-cut cell and PERC technology to maximize energy yield. Designed for versatile application, the panel captures solar energy from both the front and rear sides, significantly increasing overall output. Its 144-cell configuration is engineered to minimize shading losses and improve durability in various environmental conditions, making it an excellent choice for residential, commercial, and utility-scale projects.

Technical Specifications

Power Range

385 W

Minimum Power

405 W

Maximum Power

Cell Architecture

144 Half-cut Monocrystalline Cells

Maximum System Voltage

1500 V

Key Features

Ideal For

- Residential Installations
- Commercial Projects
- Utility-scale Solar

Technologies

Bifacial, PERC, Half-cut Cell