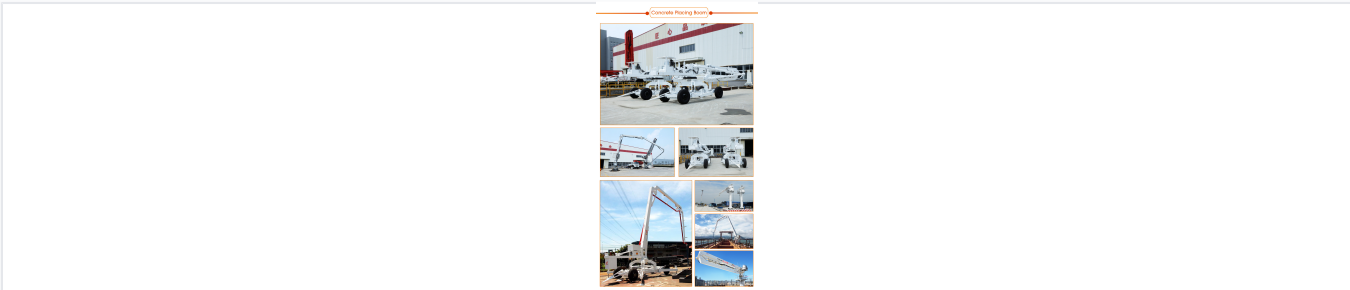


# 38 m Concrete Placing Boom

This concrete placing boom has a 38-meter reach for extensive coverage on large construction sites. Its four-section arm and hydraulic system provide smooth, controlled concrete placement.



## Overview



### High-Reach Precision Concrete Placement

The PB38BT-4R-E is a high-performance lattice tower concrete placing boom designed for large-scale construction projects such as high-rise buildings and bridges. Featuring a 38-meter reach and a four-section articulating arm, it provides exceptional maneuverability and coverage from a single setup point. This electrically powered, 360-degree rotating boom ensures smooth, stable operation through advanced electro-hydraulic proportional control technology, significantly enhancing job site productivity.

## Key Performance Metrics

### Key Performance Metrics

<b>38 m</b> Max Placing Radius	<b>40 m</b> Free Standing Height	<b>360 °</b> Slewing Range	<b>37.5 kW</b> Motor Power
-----------------------------------	-------------------------------------	-------------------------------	-------------------------------

## Boom Configuration



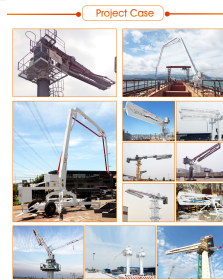
### Boom Section Specifications

Section	Length (m)	Articulation Range
1st Section	14.91	0°~86°
2nd Section	7.56	0°~180°
3rd Section	7.65	0°~180°
4th Section	7.72	0°~180°

### Technical Specifications

Hydraulic System Pressure	30 MPa
Total Equipment Weight	43000 kg
Maximum Lifting Unit	9700 kg
Delivery Pipeline Diameter	∅133x4.5mm
Operating Temperature Range	-20°C to 55°C

### Operational Features



#### Advanced Features

- Self-lifting mast section mechanism
- Combined tower body and boom assembly
- Telescopic cage including pump and cylinder
- Customizable voltage and frequency
- Smooth operation with reduced impact

#### Control System

Radio Remote Control, Electro-hydraulic Proportional Control, Gear Slewing

## Compliance & Standards



### Quality Certifications

ISO 9001:2015 • CE Certified • ISO 14001 • OHSMS 18001