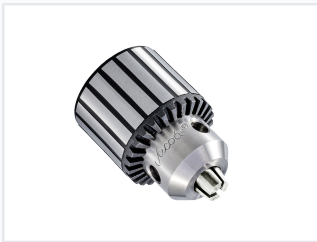


3/8-Inch Light Duty Keyed Drill Chuck

This light-duty keyed chuck is designed for power drills and rotating tools. It features a 3/8-inch (10mm) capacity and ensures secure bit retention for various drilling and fastening applications.



ADDITIONAL IMAGES



Overview

Reliable Light-Duty Keyed Chuck

This 3/8-inch light-duty keyed drill chuck is engineered for portable power tools, offering a balance of precision and durability. Featuring a plain bearing design and center-ground jaws, it ensures optimal straightness and alignment for various drilling tasks. Every unit undergoes a 100% performance and precision inspection to meet high standards for woodworking, metalworking, and general DIY applications.

Technical Specifications

Drilling Capacity

10 mm

Maximum Capacity

0.375 in

Capacity

Mount Type

Threaded

Model Reference

41BA

Design & Construction

Tightening Method

Keyed • Secure Retention

Bearing Type

Plain Bearing Design

Jaw Construction

Center-Grind for Straightness and Alignment

Applications

Ideal Applications

- Woodworking
- Metalworking
- General DIY Projects
- Portable Power Tools

Quality Assurance

Quality Control

100% inspected for performance and precision