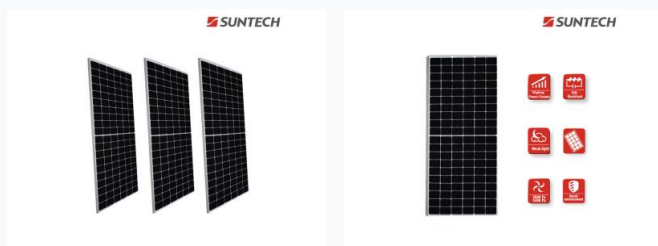


# 370W Monocrystalline Solar Panel for Energy Systems

This 370W monocrystalline solar panel is designed for solar energy systems. It is ideal for both residential and commercial applications, providing reliable and sustainable power generation.



## ADDITIONAL IMAGES



## Product Overview

### High-Efficiency Solar Power

This 370W monocrystalline solar panel is engineered for reliable and sustainable power generation in both residential and commercial applications. Its robust construction ensures durability even in harsh environments, providing long-term energy stability. Designed for optimal performance, this panel excels in weak light conditions to maximize energy yields.

## Technical Specifications

### Power Output

**370 W**

Rated Power

### Cell Technology

Monocrystalline

## Key Features

### Ideal Applications

- Residential solar systems
- Commercial energy systems
- Industrial power generation

### Performance Capabilities

PID Resistant, Weak Light Performance, High Efficiency