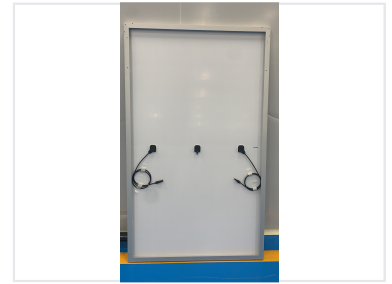
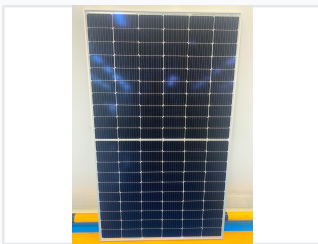


370W Mono-Crystalline Solar Panel

This high-efficiency mono-crystalline solar panel features a multi-busbar, half-cut cell design for improved power output. It is designed to withstand snow pressure up to 5400Pa and wind pressure up to 2400Pa.



ADDITIONAL IMAGES



Overview

High-Efficiency Solar Solution

This 370W mono-crystalline solar module is engineered for optimal energy conversion and long-term reliability. Featuring advanced P-Type, M6, PERC, and 9BB half-cell technology, it delivers consistent power output across residential, commercial, and utility-scale applications. Its robust construction ensures excellent resistance to environmental factors like UV radiation and moisture, providing a sustainable energy solution with superior durability.

Technical Specifications

Rated Power

370 W

Power Output

Suitable Applications

- Residential
- Commercial
- Utility-scale

Cell Technology

P-Type, M6, PERC, 9BB, Half Cell

Features

Key Features

High Efficiency • Low-light Performance • UV Resistant • Moisture Resistant