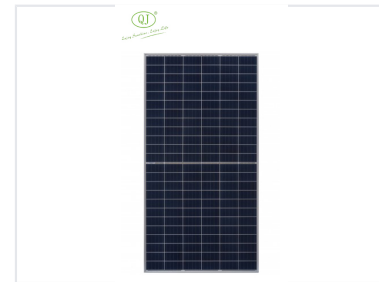


355W Half-Cut Cell Polycrystalline Solar Panel

This 355W polycrystalline solar panel utilizes half-cut cell technology for improved performance and reliability. It is designed for residential, commercial, and utility-scale applications.



Overview

High-Efficiency Solar Solution

This 355W polycrystalline solar panel utilizes advanced half-cut cell technology to deliver improved energy performance and enhanced reliability. Designed for versatile use across residential, commercial, and utility-scale installations, it provides excellent shading tolerance and lower operating temperatures. Built for durability, it ensures stable, long-term power generation under various environmental conditions.

Performance Metrics

Rated Power Output

355 W

Rated Power

17.8 %

Module Efficiency

Electrical Specifications

Electrical Characteristics

Parameter	Value
Rated Voltage (Vmp)	39
Rated Current (Imp)	9.11
Open Circuit Voltage (Voc)	47.58
Short Circuit Current (Isc)	9.64

Physical Dimensions

Panel Dimensions	2010 x 992 x 40 mm
------------------	--------------------

Features

Technology Highlights	Half-Cut Cell, Polycrystalline, Shading Tolerance, Weather Resistant
-----------------------	--