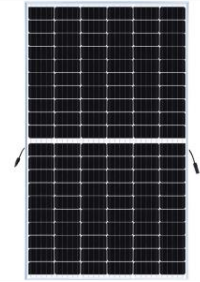
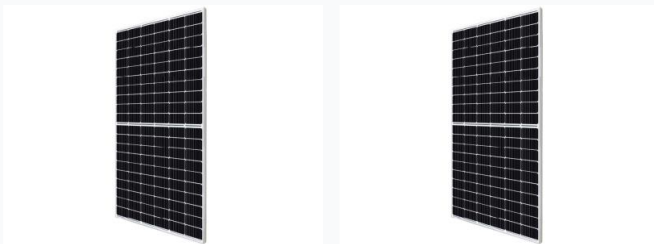


350W-375W Mono PERC Solar Panel Module

This high-efficiency module has a low temperature coefficient (Pmax) of $-0.35\% / ^\circ\text{C}$. It provides better shading tolerance and up to 26% higher power than conventional modules.



ADDITIONAL IMAGES



Product Overview

High-Efficiency Mono PERC Solar Module

This 120-cell Monocrystalline PERC module is engineered for superior energy generation, offering 26% higher power output compared to conventional modules. Designed for residential, commercial, and utility-scale applications, it combines high efficiency with excellent low-light performance and shading tolerance. The module is built for long-term reliability, featuring low temperature coefficients and significant reductions in both LCOE and overall system costs.

Performance Metrics

Power Output

350 W

Minimum Power

375 W

Maximum Power

Key Efficiency Gains

- 26% higher power than conventional modules
- Up to 4.5% lower LCOE
- Up to 2.7% lower system cost

Technical Specifications

Cell Configuration	120 cells
NMOT	42 °C
Temperature Coefficient (Pmax)	$-0.35\% / ^\circ\text{C}$
Key Features	Mono PERC, Low Shading Tolerance, PID Resistance, High Efficiency