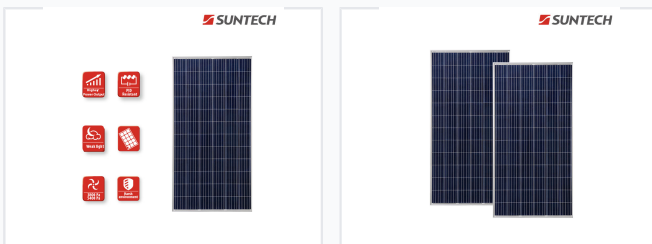


335W Polycrystalline Solar Panel

This 335W polycrystalline solar panel is designed for solar power systems. It provides reliable performance and durability for various applications.



ADDITIONAL IMAGES



Overview



Diagram showing the technical composition and busbar design of the solar module.

High-Efficiency Polycrystalline Module

This 335W polycrystalline solar panel is engineered for reliability and high energy yield in residential, commercial, and industrial applications. Utilizing advanced 5-busbar cell technology, the module reduces micro-crack risks and electrode resistance to maximize conversion efficiency. Built for durability, it is certified to withstand significant environmental pressure loads and offers consistent performance even in harsh conditions.

Electrical Characteristics

Performance at STC

335 W Maximum Power	38 V Optimum Operating Voltage	8.82 A Optimum Operating Current	17.2 % Module Efficiency
-------------------------------	--	--	------------------------------------

Mechanical Specifications



Standard industrial packaging for secure transportation and logistics.

Physical Dimensions & Weight

Attribute	Specification
Dimensions	1960 x 992 x 40 mm
Weight	22.1 kg
Cell Type	Polycrystalline 6-inch
Cell Configuration	72 (6 x 12)

Certifications

Compliance & Standards

IEC 61215, IEC 61730, CE, ISO 9001, ISO 14001, IP68

Warranty

Linear Performance Warranty

- 12-year product workmanship warranty
- 25-year linear performance warranty
- 97.5% power output in first year
- 80.7% power output at 25th year