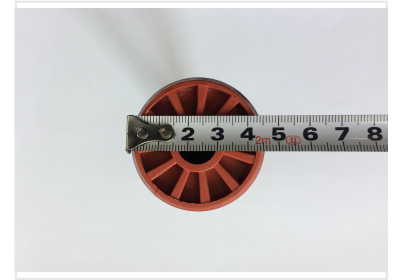
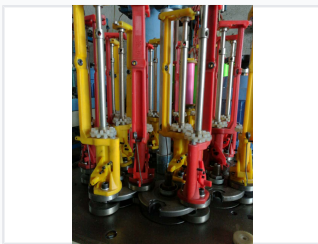


33 Spindle High Speed Lace Braiding Machine

This high-speed braiding machine is equipped with 33 spindles for producing lace. It is designed for creating flat RIC-RAC lace, piping tape, jacquard tape, elastic bands, and shoelaces.



ADDITIONAL IMAGES



Overview



High-Speed Lace Braiding Solution

The GH-33 is a high-performance 33-spindle braiding machine specifically engineered for the efficient production of flat RIC-RAC lace, piping tapes, and jacquard tapes. Featuring a dual-head configuration and a maximum speed of 300 RPM, it delivers high-volume output for shoelaces, elastic bands, and decorative fibre bands. The machine is built with precision-machined ductile iron components and an automated yarn cutting device to ensure consistent quality and reduced downtime in professional textile environments.

Performance Metrics

Performance Metrics

300 RPM

Max Speed

33

Carriers per Head

2

Production Heads

1.1 kW

Motor Power

Technical Specifications

Machine & Component Data

Parameter	Value
Machine Size	1400 x 950 x 1700 mm
Bobbin Dimension	48 x 140 mm
Max M.P.H	60 x 2
Voltage Support	220/380 VAC, 50/60Hz

Applications

Supported Products

- Flat RIC-RAC Lace
- Piping Tape
- Jacquard Tape
- Elastic Bands
- Fibre Bands
- Various Ropes
- Specialty Bands
- Shoelaces

Manufacturing & Quality

Technical Advantages

- Base casting machined after aging treatment for perfect flatness
- Ductile iron 800 panels for high precision and wear resistance
- Core shaft rotor with high-frequency surface treatment and precision grinding
- Spindle base and impeller fit tolerance controlled within 0.03mm
- Rotor nylon pads cast with imported wear-resistant grease

Operational Features

Key Features

- Frequency converter for stepless speed adjustment
- Automatic yarn cutting device
- Humanized design for safe and easy operation
- Quick-change spindle structure for fast bobbin replacement
- Direct and convenient maintenance access

Compliance

Certifications

CE, ISO