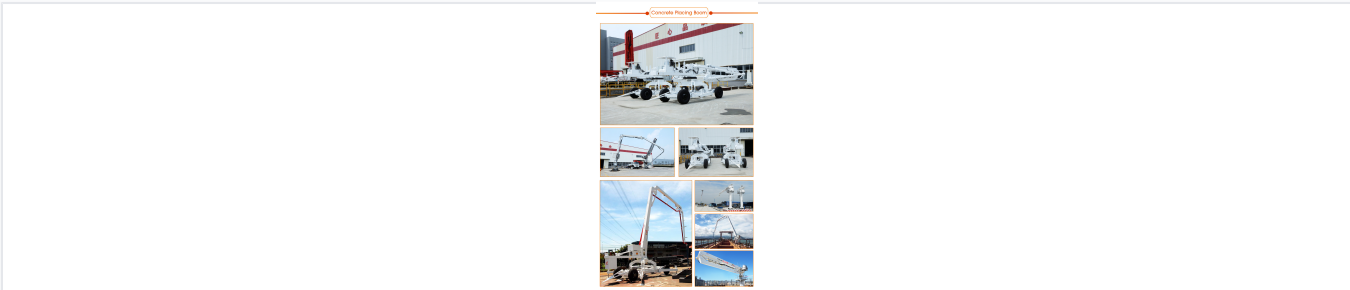


33-Meter Concrete Placing Boom with 4-Section Arm

This concrete placing boom has a four-section articulating arm for extensive reach and maneuverability. Its hydraulic system allows for smooth and controlled movements, enabling operators to accurately position the concrete discharge point.



Overview



The 4-section articulating boom provides exceptional reach and flexibility for complex construction sites.

High-Efficiency Concrete Placement

The PB33A-4R-II is a high-performance concrete placing boom featuring a 33-meter reach and a versatile 4-section articulating arm. Designed for precision in demanding environments, it excels in high-rise construction, bridge building, and large-scale infrastructure projects. Its lightweight, balance-arm-free design enhances maneuverability and simplifies on-site installation, providing a reliable solution for professional B2B sourcing needs.

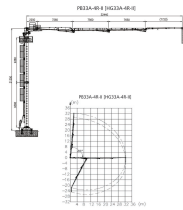
Key Performance Metrics

Key Performance Metrics

32.4 m Max Placing Radius	21.3 m Free Standing Height	30 MPa System Pressure	18.5 kW Motor Power
-------------------------------------	---------------------------------------	----------------------------------	-------------------------------

Boom Configuration

构造及工作范围
STRUCTURE AND SCOPE OF WORK



Detailed technical diagram showing the 32.4m working radius and articulating boom movement range.

Boom Section Details

Section	Length (m)	Articulation Range
1st Section	9.51	0°~86°
2nd Section	7.56	0°~180°
3rd Section	7.65	0°~180°
4th Section	7.72	0°~180°

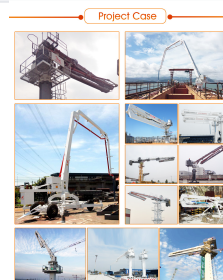
Technical Specifications

Slewing Range	360°
Delivery Pipeline Diameter	1133x4.5mm
Delivery Hose	5" x 3000 mm
Total Weight	20100 kg
Max Lifting Unit Weight	4800 kg

Operational Features



Highlighting the integrated pump station and optional remote control systems available for the unit.



The PB33A-4R-II deployed on a high-rise construction project utilizing its floor-climbing capability.

Design Advantages

- Lightweight design for optimized floor loading
- Integrated hydraulic pump station and electric cabinet
- No balance arm for flexible rotation
- Reduced lifting capacity requirements for site cranes
- Gear slewing mechanism with cushion valve

Climbing Modes

Floor Climbing, Shaft Climbing

Optional Configurations

Control System Options

HBC Remote Control • AUTECH Remote Control • Radio Remote Control • Cable Remote Control • Electric Proportional Control

Customizable Columns

- 4M Column
- 5M Column
- 6M Column
- 10M Column

Environmental & Power

Ambient Operating Temperature	-20°C to 55°C
Standard Power Supply	380V / 50Hz (Customizable)

Certifications

Quality & Safety Standards	ISO 9001:2015, CE Certified, ISO 14001, OHSMS 18001
----------------------------	---