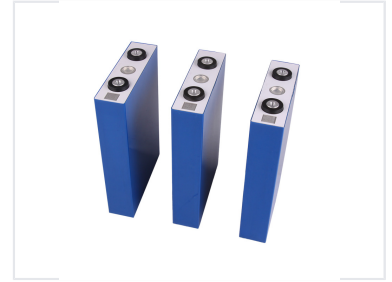
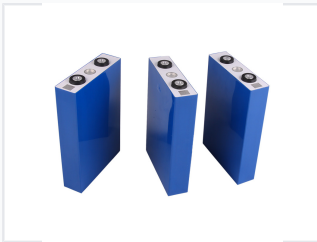


3.2V 200Ah LiFePO4 Prismatic Battery Cell

This 3.2V 200Ah LiFePO4 prismatic battery cell is designed for energy storage systems and electric vehicles. It features excellent cycle life, thermal stability, and safety.



ADDITIONAL IMAGES



Product Overview

High-Performance LiFePO4 Energy Storage

This 3.2V 200Ah LiFePO4 prismatic battery cell offers superior thermal stability and safety compared to traditional lead-acid alternatives. Engineered for demanding environments, it provides an extended cycle life of over 2000 cycles and operates effectively across a wide temperature range. It is an ideal, lightweight building block for custom battery packs in solar storage, electric mobility, and backup power systems.

Key Features

Long Cycle Life, Lightweight, High Safety, Wide Temperature Range

Battery Cell Technical Data

Cell Specifications

3.2 V Nominal Voltage	200 Ah Capacity	3.5 kg Weight
---------------------------------	---------------------------	-------------------------

Operating Voltages

Parameter	Value
Charge cut-off voltage	3.6
Discharge cut-off voltage	2.6

Battery Pack Specifications

Pack Capabilities

- 12V Configuration
- 4s1p Combination
- Integrated BMS
- Includes wire, connector, and enclosure

Performance Limits

Parameter	Value
Max Constant Discharging	100A
Max Constant Charging	50A
Cycle Life (80% DOD)	2000+ times
Warranty	3 years

Applications

Recommended Applications

Wheelchairs & Scooters • Solar/Wind Storage • UPS Backup • Golf Trolleys • Electric Bikes