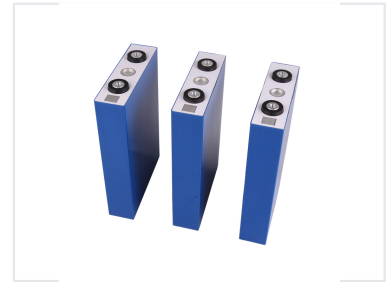
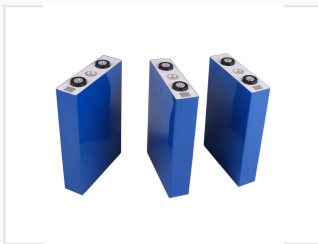


# 3.2V 100Ah LiFePO4 Prismatic Battery Cell for Solar Street Lights

This 3.2V 100Ah LiFePO4 prismatic battery cell is designed for solar street light applications. It provides excellent thermal stability, a long cycle life, and high energy density.



## ADDITIONAL IMAGES



## Product Overview

### High-Performance LiFePO4 Energy Solution

This 3.2V 100Ah LiFePO4 prismatic battery cell is engineered for reliability in solar street lighting and energy storage systems. It offers a significantly longer cycle life and higher power density compared to traditional lead-acid alternatives, providing an efficient drop-in replacement. With built-in safety chemistry and a wide operating temperature range, this cell is designed for demanding environments requiring consistent power.

## Cell Specifications

### Performance Metrics

<b>3.2 V</b> Nominal Voltage	<b>100 Ah</b> Capacity	<b>3.5 kg</b> Weight
---------------------------------	---------------------------	-------------------------

### Voltage Cut-offs

Metric	Voltage
Charge Cut-off	3.6V
Discharge Cut-off	2.6V

## Battery Pack Configuration

### 12V Pack Configuration

- Voltage: 12V
- Capacity: 100Ah
- Structure: 4s1p
- Included: BMS, wire, connector, and enclosure

### Performance Ratings

**20 A**

Max Constant Discharge

**50 A**

Peak Current

**50 A**

Max Constant Charge

## Operational Conditions

Temperature Range

-20 to 60

Certifications

CE, UL, RoHS

## Application

Common Applications

Solar/Wind Energy Storage, Wheelchairs & Scooters, Golf Trolleys, UPS Back-up, Electric Bikes

## Warranty

Warranty Period

3 Years