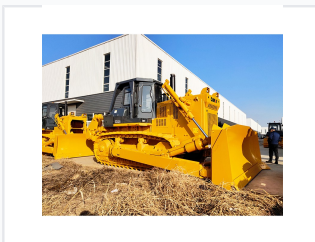


320hp Hydraulic Crawler Bulldozer

This hydraulic crawler bulldozer is powered by a 320hp engine for exceptional pushing and ripping performance. Its crawler tracks provide excellent traction and stability on various terrains.



ADDITIONAL IMAGES



Overview

High-Performance Earthmoving Capability

This 320hp hydraulic crawler bulldozer is engineered for demanding construction and mining applications requiring heavy-duty earthmoving. Featuring a robust main frame and an advanced engine capable of operating at high altitudes up to 4,300 meters, it delivers consistent power and reliability. The machine is designed for excellent traction, precise hydraulic control, and ease of maintenance in diverse and challenging terrains.

Technical Specifications

Rated Power

257 KW
Rated Power

345 HP
Rated Power

Operating Weight

37.2 ton

Engine Model

Cummins NTA855-C360S10

Rated Speed

2000 rpm

Features

Machine Highlights

- Turbocharged engine for high-altitude operation up to 4,300 meters
- Full box structure main frame with high impact load capacity
- Independent cooling system for engine, chassis, and air-to-water intercooling
- High-efficiency two-stage straight-tooth final drive
- Compatible with straight tilt blade and three-shank ripper

Compliance

National III Emission Standard