

32-Meter Concrete Placing Boom

This concrete placing boom has a 32-meter reach and a 3-section boom for flexible operation. Its hydraulic system allows for smooth and controlled movements, ensuring accurate concrete delivery.



ADDITIONAL IMAGES



Overview



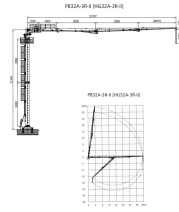
The 3-section articulated boom provides precise concrete delivery for large-scale construction.

High-Efficiency Concrete Placement

The PB32A-3R-II is a versatile 32-meter hydraulic concrete placing boom designed for precise distribution in high-rise buildings, bridges, and large-scale construction projects. Featuring a 3-section R-type boom configuration, it offers exceptional maneuverability and a full 360-degree slewing range to navigate complex site obstacles. Its modular, lightweight design facilitates easy installation and floor or shaft climbing, significantly reducing labor costs and improving overall project efficiency.

Key Performance Metrics

构造及工作范围
STRUCTURE AND SCOPE OF WORK



Detailed diagram showing the horizontal and vertical reach range of the 32-meter placing boom.

Performance Metrics

31.7 m

Max Placing Radius

21.3 m

Free-standing Height

360 °

Slewing Range

11 kW

Motor Power

Boom Configuration

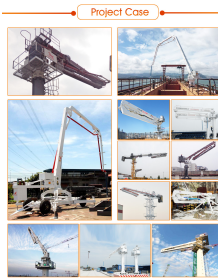
Boom Section Details

| Section | Length (m) | Articulation Range |
|-------------|------------|--------------------|
| 1st Section | 14.5 | 0° to 86° |
| 2nd Section | 9.2 | 0° to 180° |
| 3rd Section | 8 | 0° to 180° |

Technical Specifications

| | |
|-----------------------------|---------------|
| Hydraulic System Pressure | 28 MPa |
| Total Machine Weight | 18150 kg |
| Delivery Pipeline Diameter | 1133x 4.5 mm |
| Operating Temperature Range | -20°C to 55°C |

Features & Options



Real-world application showing the boom's maneuverability on a high-rise construction site.

Climbing Modes

- Floor climbing
- Shaft climbing

Design Advantages

- Integrated hydraulic pump station and electric cabinet
- No balance arm for flexible slewing
- Lightweight design for floor loading safety
- Customizable column lengths (4M, 5M, 6M, 10M)
- Push-in hydraulic connectors for easy maintenance

Control Systems

HBC Remote Control, AUTECH Remote Control, Electric Proportional Control, Radio Remote Control, Cable Remote Control

Compliance

Quality Standards

ISO 9001:2015 • ISO 14001 • OHSMS 18001 • CE Certified • 2014/35/EU