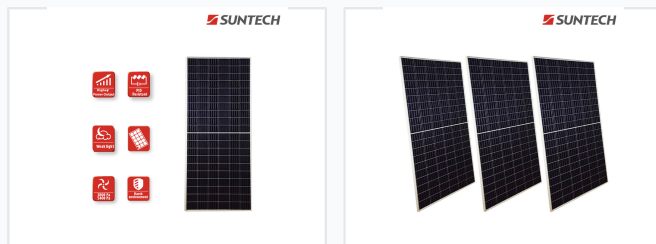


# 305W Polycrystalline Solar Panel for Home Power

This 305W polycrystalline solar panel is designed for home power systems. It utilizes high-efficiency polycrystalline solar cells to maximize energy conversion.



## ADDITIONAL IMAGES



## Product Overview



### High-Efficiency Polycrystalline Solar Module

This 305W polycrystalline solar module is designed for optimal energy conversion in residential solar power systems. Utilizing advanced 120-cell half-cut technology, it delivers superior power output and exhibits excellent performance in weak light conditions, such as haze or cloudy weather. Built with a robust anodized aluminum frame and IP68-rated junction box, it ensures long-term reliability and water resistance even in harsh environments like coastlines or deserts.

## Electrical Performance

### Maximum Power (Pmax)

**305 W**

Max Power at STC

**18.1 %**

Module Efficiency

### Electrical Characteristics (STC)

Parameter	Value
Optimum Operating Voltage (Vmp)	32.7 V
Optimum Operating Current (Imp)	9.33 A
Open Circuit Voltage (Voc)	39.4 V
Short Circuit Current (Isc)	9.75 A

## Mechanical Characteristics

### Physical Specifications

- Dimensions: 1684 x 1002 x 35 mm
- Weight: 19.0 kg
- Cell Count: 120 (6 x 20) polycrystalline cells
- Front Glass: 3.2 mm tempered glass

## Operational Limits

### Operational Environment

-40°C to +85°C Operating Temperature, 1000/1500V DC Max System Voltage, 20A Max Series Fuse

## Certifications and Compliance

### Industry Certifications

CE • IEC 61215 • IEC 61730 • ISO 9001 • ISO 14001 • MCS • VDE

## Warranty

### Warranty Period

- 12-year product warranty
- 25-year linear performance warranty
- Year 1 output: 97.5%
- Year 25 output: 80.7%