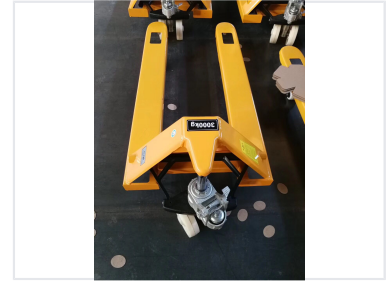


3000kg Capacity Hand Pallet Truck

This hand pallet truck is a robust and reliable material handling equipment designed for efficient horizontal movement of palletized goods. Featuring a 3000kg capacity and heavy-duty steel construction, it is ideal for warehouses, factories, and distribution centers.



ADDITIONAL IMAGES



Product Overview

Robust Material Handling Solution

This heavy-duty hand pallet truck is engineered for the efficient horizontal movement of palletized goods in demanding environments. Constructed from durable steel, it supports loads up to 3000kg, making it an essential tool for warehouses, factories, and distribution centers. Its ergonomic design and smooth hydraulic lift system ensure effortless operation, significantly enhancing productivity while reducing manual labor strain.

Technical Specifications

Load Capacity

3000 kg
Max Load

Material Heavy-duty steel

Lift System Hydraulic

Features

Key Features

- Ergonomic handle for comfortable operation
- Tandem load wheels for enhanced stability
- Smooth lifting and lowering mechanism
- Easy maneuverability on various surfaces

Ideal Applications Warehouses, Factories, Distribution Centers