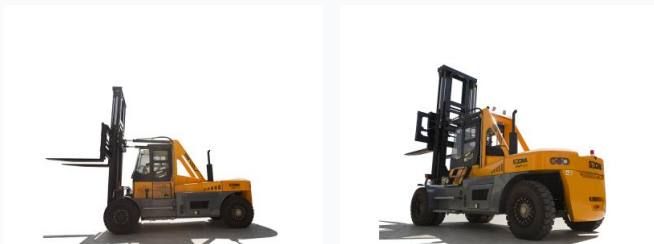


# 30 Ton Heavy-Duty Diesel Forklift

This heavy-duty diesel forklift has a 30-ton lifting capacity. It is designed for powerful performance, energy conservation, and environmental protection with a quality turbocharged engine.



## ADDITIONAL IMAGES



## Overview



A robust 30-ton diesel forklift designed for high-capacity industrial lifting.



Ideal for logistics, ports, and heavy manufacturing environments.

### High-Performance 30-Ton Material Handling Solution

This heavy-duty diesel forklift is engineered for demanding industrial applications, offering a robust 30-ton lifting capacity. It features a high-quality turbocharged engine designed for low fuel consumption and high torque reserves, ensuring reliable power in ports, construction sites, and mining operations. The vehicle is built with a 3D finite element analyzed frame and a full-hydraulic steering system for maximum stability and maneuverability under heavy loads.

## Performance Metrics



Equipped with high-durability pneumatic tires for rough terrain operation.

### Key Performance Statistics

**30 t**

Rated Load

**1250 mm**

Load Center

**28 km/h**

Max Travel Speed

**260 mm/s**

Lifting Speed (Loaded)

## Engine & Powertrain

### Engine Configuration

Feature	Specification
Engine Type	Turbocharged Diesel
Cylinder Count	6
Rated Power	178KW - 194KW
Rated Speed	2200 rpm
Transmission Gears	2 Front / 1 Rear

## Dimensions

### Physical Dimensions

- Overall Length (with forks): 9590 mm
- Overall Width: 3200 mm
- Wheelbase: 4800 mm
- Fork Dimensions: 2440 x 320 x 110 mm
- Min. Turning Radius: 7260 mm

## Mast & Lifting



The box-type internal-external mast provides superior visibility and lifting performance.

### Lifting Specifications

Parameter	Value
Mast Lifting Height	3500 mm
Max. Lifting Height	5700 mm
Mast Height (Lowered)	3950 mm
Mast Tilt Angle (F/R)	6° / 12°
Lowering Speed (Loaded)	250 mm/s

## Chassis & Safety



Engineered with a reinforced chassis for maximum stability during heavy cargo handling.

### Chassis & Safety Features

Hydraulic Clamp Disc Brakes, Full-Hydraulic Steering, Box-Type Frame, 3D Finite Element Analysis, Pneumatic Tyres (14.00-24-32PR), AC & Heater Cab, Rear View Display

## Certifications

### Compliance & Quality

ISO 9001:2015 • CE Certified • Special Equipment License

## Service & Support

### After-Sales Support

- 12-month or 2000-hour warranty coverage
- Global spare parts availability
- On-site installation and maintenance support
- Customized operator training programs
- Technical consultation and inspection reports