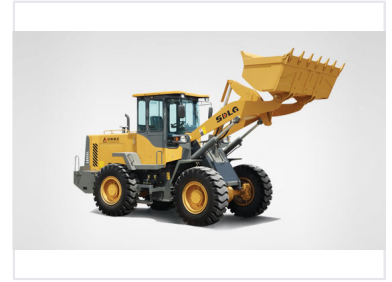


# 3-Ton Hydraulic Wheel Loader

The 3-ton wheel loader is a versatile construction machine designed for efficient material handling and loading tasks. It features a robust hydraulic system for powerful lifting and precise control, enabling smooth operation in demanding environments.



## Overview

### Versatile 3-Ton Material Handling Solution

This 3-ton hydraulic wheel loader is engineered for high-efficiency material handling across construction, mining, and agricultural sectors. It features a robust hydraulic system for precise control and a high-capacity bucket designed to maximize productivity in demanding environments. With an ergonomic cabin and articulated steering, operators benefit from superior maneuverability and comfort during long shifts.

## Performance Metrics

### Key Performance Indicators

**3 Ton**

Rated Load

**30 %**

Pump Life Extension

## Engine & Powertrain

### Powertrain Highlights

- Single-turbine hydraulic torque converter for optimized engine use
- Enlarged torque for superior tractive force
- Counter-shaft transmission for high efficiency
- Enforced driving axle for high loading power

Engine Model

YC6B125-T21

## Hydraulic & Steering Systems

### Hydraulic Pump

Super High Pressure • Extended Service Life

Steering System

Full hydraulic load sensing steering

## Operator Comfort & Control

### Cabin & Controls

- Top grade shock-absorbing comfortable chairs
- Soft shaft transmission control system
- Oil pressure switch alarm for reliability
- Ergonomic layout with clear visibility

## Maintenance & Design

### Maintenance Features

- Higher engine hood for convenient repair access
- Wider back design for easier servicing
- Optimized water tank system with increased radiating area
- Easy-to-maintain counter-shaft transmission

## Applications

### Ideal Applications

Construction Sites, Mining Operations, Agricultural Applications, Material Handling