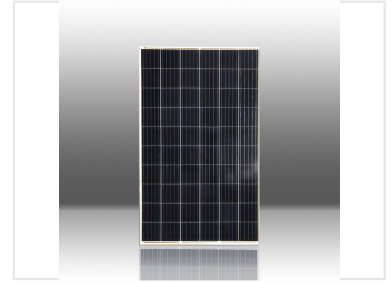


# 280W Polycrystalline Solar Panel

This high-efficiency 280W polycrystalline solar panel is suitable for residential and commercial applications. Its robust construction ensures durability and reliable long-term performance.



## Product Overview

### High-Efficiency Polycrystalline Performance

This 280W polycrystalline solar panel is engineered for both residential and commercial solar installations, offering a reliable balance of cost and efficiency. With a robust construction designed to withstand various weather conditions, it ensures consistent long-term performance. The advanced cell arrangement maximizes sunlight absorption, making it an ideal choice for both grid-tied and off-grid energy systems.

## Technical Specifications

### Rated Power Output

**280 W**

Maximum Power

### Cell Type

Polycrystalline

## Certifications & Application

### Suitable Applications

Residential, Commercial, Grid-tied Systems, Off-grid Systems