

28-Ton Heavy-Duty Diesel Forklift for Container Handling

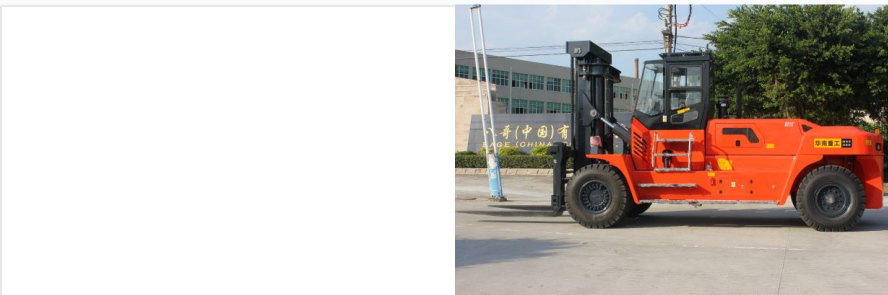
This heavy-duty 28-ton diesel forklift is designed for lifting and transporting containers. It features a robust chassis and a powerful diesel engine for reliable performance.



ADDITIONAL IMAGES



Product Overview



High-Performance 28-Ton Container Handler

This heavy-duty diesel forklift is specifically engineered for demanding container handling and industrial lifting tasks. It features a high-quality turbocharged engine for superior power performance and energy conservation, paired with a full-hydraulic steering system for flexible operation. The robust box-type frame and reinforced mast structure ensure exceptional stability and reliability during heavy-load cycles in ports and logistics hubs.

Core Performance



Key Performance Metrics

28 t

Rated Load

1250 mm

Load Center

5700 mm

Max Lifting Height

39000 kg

Service Weight

Engine & Powertrain

Engine Specifications

Configuration	Displacement	Power Output	Rated Speed
Standard Turbocharged	9.726 L	178 kW	2200 rpm
High-Output Option	8.3 L	194 kW	2200 rpm

Number of Cylinders

6

Transmission Gears (Fwd/Rev)

2 / 1

Operational Dimensions



Physical Dimensions

Dimension Type	Measurement
Overall Length (with forks)	9590 mm
Overall Width	3200 mm
Wheelbase	4800 mm
Fork Dimensions (L x W x H)	2440 x 320 x 110 mm
Min. Turning Radius	7260 mm

Chassis & Handling



Tyre Configuration

- Front/Rear Specs: 14.00-24-32PR
- Front Wheels: 4
- Rear Wheels: 2
- Brake Type: Hydraulic clamp disc

Mast & Hydraulics



Mast & Hydraulic System

- Box-type internal-external mast
- Special all-round roller bearings
- Standard hydraulic fork positioner
- Attachments working pressure: 18 Mpa
- Attachments oil flow: 80 l/min

Operator Comfort

Cabin Features

Full Enclosed Cab, Air Conditioning, Heater, Rear View Display, Pilot Valve Control

Speed & Gradeability

Speed Performance

Condition	Travel Speed	Lifting Speed
With Load	24 km/h	260 mm/s
Without Load	28 km/h	280 mm/s

Max Gradeability (Loaded/Unloaded)

20% / 21%