

28-Meter Concrete Placing Boom

The 28-meter concrete placing boom is designed for efficient and precise concrete placement on construction sites. Its robust construction and hydraulic system ensure smooth operation and accurate positioning.



ADDITIONAL IMAGES



Overview



The PB28A-3R-II features a robust 28-meter reach for versatile construction site coverage.

High-Efficiency Concrete Placement

The PB28A-3R-II is a high-performance concrete placing boom featuring a three-section articulating arm with a 27.7-meter maximum radius. Designed for precision and safety, it offers a full 360-degree slewing range and is ideal for high-rise buildings, bridges, and large-scale infrastructure projects. This versatile unit supports both floor and shaft climbing configurations, significantly reducing labor costs while enhancing site productivity.

Key Performance Metrics

Key Performance Metrics

27.7 m

Max Placing Radius

21.3 m

Free-standing Height

360 °

Slewing Range

11 kW

Motor Power

Boom Configuration

Boom Section Details

Section	Length (m)	Articulation Angle
1st Section	10.5	0°~86°
2nd Section	9.2	0°~180°
3rd Section	8	0°~180°

Technical Specifications

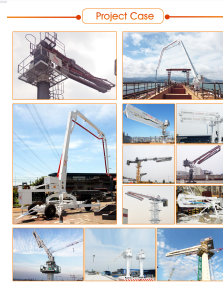
Delivery System

- Delivery Pipeline Diameter: 1133x4.5mm
- Delivery Hose Diameter: 5" x 3000 mm
- System Hydraulic Pressure: 28 MPa
- Mode of Slewing: Gear Slewing

Operating Conditions

- Circumstance Temperature: -20°C to 55°C
- Power Supply: 380V/50Hz (Customizable)
- Hydraulic Oil (5°C-55°C): HM46 Anti-wear
- Hydraulic Oil (-20°C-5°C): HM32 Anti-wear

Operational Features



Practical application of the placing boom in a high-rise construction project case.

Main Features

- Lightweight design for optimized floor loading
- Integrated hydraulic pump station and electric control cabinet
- Design without balance arm for flexible operation
- Reduced lifting unit weight for easier site installation
- Proportional control and radio remote control options

Available Climbing Modes

Floor Climbing, Shaft Climbing, Elevator Well Climbing

Physical Data

Total Weight	16200 kg
Max Lifting Unit	4100 kg

Compliance

Certifications

CE • ISO 9001 • ISO 14001 • OHSMS 18001