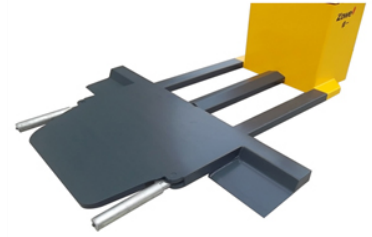


2.5 Ton Vehicle Positioning Mover

This vehicle mover is capable of handling vehicles up to 2.5 tons. The low-profile design allows for easy access under vehicles, while the integrated lifting mechanism provides secure and stable lifting.



Product Overview

Professional Vehicle Maneuvering

This 2.5-ton vehicle positioning mover is a robust solution designed for efficiently maneuvering vehicles in confined spaces. Built with heavy-duty steel and a low-profile design, it allows for easy access under vehicles in automotive workshops, garages, and showrooms. The integrated lifting mechanism and smooth-rolling wheels ensure secure, stable, and effortless movement.

Technical Specifications

Load Capacity	2.5 tons
Construction Material	Heavy-duty steel
Finish	Powder-coated

Features & Benefits

Key Features

- Low-profile design for easy access
- Smooth-rolling wheels
- Integrated lifting mechanism
- Safety locking mechanism
- Corrosion-resistant finish

Ideal For	Automotive Workshops, Garages, Showrooms
-----------	--