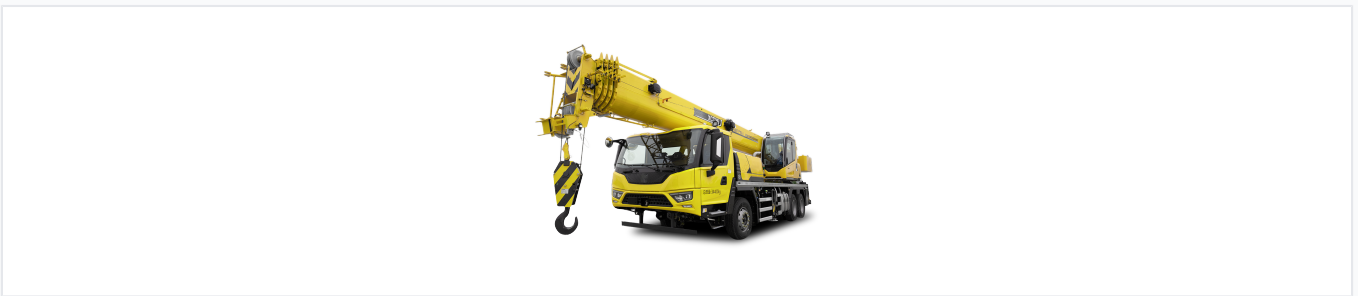


25-Ton Truck Crane with Telescopic Boom

This truck crane provides excellent lifting and handling performance. Its operation is economical, with high energy efficiency throughout the entire cycle.



Overview



The XCT25G5-1 truck crane featuring a five-section telescopic boom for versatile lifting operations.

XCT25G5-1 Enhanced Truck Crane

The XCT25G5-1 is a high-performance 25-ton truck crane designed for demanding lifting and construction applications. It features a five-section telescopic main boom and advanced hydraulic control systems, ensuring precise and smooth operation in all working conditions. With improved steering and gearshift systems, this crane offers enhanced maneuverability and operator comfort, making it an efficient choice for diverse lifting projects.

Lifting Performance

Max Lifting Height

50.1 m

Main Boom + Jib

Main Boom Length	43 m
Fixed Jib Length	8.3 m

Efficiency & Technology

Efficiency Improvements

- Loaded telescopic technology: 30%-50% efficiency increase
- Double-cylinder synchronous retraction: 40% efficiency increase
- Handling smoothness: 30% improvement
- Steering maneuverability: 20% force reduction
- Gearshift effort: 50% force reduction

Technical Specifications

Total Mass	34400 kg
Boom Sections	5

Features

Key Features

Loaded Telescopic Tech • Synchronous Retraction • Intelligent Control • G-star Cabin